



Standard Test Method for Determination of Individual Components in Spark Ignition Engine Fuels by 50-Metre Capillary High Resolution Gas Chromatography¹

This standard is issued under the fixed designation D6733; the number immediately following the designation indicates the year of original adoption or, in the case of revision, the year of last revision. A number in parentheses indicates the year of last reapproval. A superscript epsilon (ϵ) indicates an editorial change since the last revision or reapproval.

1. Scope

1.1 This test method covers the determination of individual hydrocarbon components of spark-ignition engine fuels with boiling ranges up to 225°C. Other light liquid hydrocarbon mixtures typically encountered in petroleum refining operations, such as, blending stocks (naphthas, reformates, alkylates, and so forth) may also be analyzed; however, statistical data was obtained only with blended spark-ignition engine fuels. The tables in [Annex A1](#) enumerate the components reported. Component concentrations are determined in the range from 0.10 to 15 mass %. The procedure may be applicable to higher and lower concentrations for the individual components; however, the user must verify the accuracy if the procedures are used for components with concentrations outside the specified ranges.

1.2 This test method is applicable also to spark-ignition engine fuel blends containing oxygenated components. However, in this case, the oxygenate content must be determined by Test Methods [D5599](#) or [D4815](#).

1.3 Benzene co-elutes with 1-methylcyclopentene. Benzene content must be determined by Test Method [D3606](#) or [D5580](#).

1.4 Toluene co-elutes with 2,3,3-trimethylpentane. Toluene content must be determined by Test Method [D3606](#) or [D5580](#).

1.5 Although a majority of the individual hydrocarbons present are determined, some co-elution of compounds is encountered. If this procedure is utilized to estimate bulk hydrocarbon group-type composition (PONA) the user of such data should be cautioned that error may be encountered due to co-elution and a lack of identification of all components present. Samples containing significant amounts of naphthenic (for example, virgin naphthas) constituents above *n*-octane may reflect significant errors in PONA type groupings. Based on the interlaboratory cooperative study, this procedure is applicable to samples having concentrations of olefins less than 20 mass %. However, significant interfering coelution with the

olefins above C_7 is possible, particularly if blending components or their higher boiling cuts such as those derived from fluid catalytic cracking (FCC) are analyzed, and the total olefin content may not be accurate. Many of the olefins in spark ignition fuels are at a concentration below 0.10 %; they are not reported by this test method and may bias the total olefin results low.

1.5.1 Total olefins in the samples may be obtained or confirmed, or both, by Test Method [D1319](#) (volume %) or other test methods, such as those based on multidimensional PONA type of instruments.

1.6 If water is or is suspected of being present, its concentration may be determined, if desired, by the use of Test Method [D1744](#). Other compounds containing sulfur, nitrogen, and so forth, may also be present, and may co-elute with the hydrocarbons. If determination of these specific compounds is required, it is recommended that test methods for these specific materials be used, such as Test Method [D5623](#) for sulfur compounds.

1.7 The values stated in SI units are to be regarded as the standard. The values given in parentheses are provided for information only.

1.8 *This standard does not purport to address all of the safety concerns, if any, associated with its use. It is the responsibility of the user of this standard to establish appropriate safety and health practices and determine the applicability of regulatory limitations prior to use.*

2. Referenced Documents

2.1 ASTM Standards:²

[D1319](#) Test Method for Hydrocarbon Types in Liquid Petroleum Products by Fluorescent Indicator Adsorption

[D1744](#) Test Method for Determination of Water in Liquid Petroleum Products by Karl Fischer Reagent³

[D3606](#) Test Method for Determination of Benzene and Toluene in Finished Motor and Aviation Gasoline by Gas Chromatography

¹ This test method is under the jurisdiction of ASTM Committee [D02](#) on Petroleum Products and Lubricants and is the direct responsibility of Subcommittee [D02.04.01](#) on Gas Chromatography Methods.

Current edition approved Nov. 1, 2006. Published January 2007. Originally approved in 2001. Last previous edition approved in 2001 as D6733 – 01. DOI: 10.1520/D6733-01R06.

² For referenced ASTM standards, visit the ASTM website, www.astm.org, or contact ASTM Customer Service at service@astm.org. For *Annual Book of ASTM Standards* volume information, refer to the standard's Document Summary page on the ASTM website.

- D4057** Practice for Manual Sampling of Petroleum and Petroleum Products
- D4420** Test Method for Determination of Aromatics in Finished Gasoline by Gas Chromatography³
- D4815** Test Method for Determination of MTBE, ETBE, TAME, DIPE, tertiary-Amyl Alcohol and C₁ to C₄ Alcohols in Gasoline by Gas Chromatography
- D5580** Test Method for Determination of Benzene, Toluene, Ethylbenzene, *p/m*-Xylene, *o*-Xylene, C₉ and Heavier Aromatics, and Total Aromatics in Finished Gasoline by Gas Chromatography
- D5599** Test Method for Determination of Oxygenates in Gasoline by Gas Chromatography and Oxygen Selective Flame Ionization Detection
- D5623** Test Method for Sulfur Compounds in Light Petroleum Liquids by Gas Chromatography and Sulfur Selective Detection
- E355** Practice for Gas Chromatography Terms and Relationships

3. Terminology

3.1 *Definitions*—This test method makes reference to many common gas chromatographic procedures, terms, and relationships. Detailed definitions can be found in Practice **E355**.

4. Summary of Test Method

4.1 Representative samples of the petroleum liquid are introduced into a gas chromatograph equipped with an open tubular (capillary) column coated with specified stationary phase(s). Helium carrier gas transports the vaporized sample through the column in which it is partitioned into individual components, which are sensed with a flame ionization detector as they elute from the end of the column. The detector signal is recorded digitally by way of an integrator or integrating computer. Each eluting component is identified by comparing its retention time to those established by analyzing reference standards or samples under identical conditions. The concentration of each component in mass % is determined by normalization of the peak areas after correction of selected components with detector response factors. The unknown components are reported individually as well as a summary total.

5. Significance and Use

5.1 Knowledge of the individual component composition (speciation) of gasoline fuels and blending stocks is useful for refinery quality control and product specification. Process control and product specification compliance for many individual hydrocarbons may be determined through the use of this test method.

6. Apparatus

6.1 *Instrumentation*—A gas chromatograph capable of operating under the conditions outlined in **Table 1**, equipped with

TABLE 1 Operating Conditions

Temperatures	Method 1	Method 2
Column initial isotherm, °C	35	10
Initial hold time, min.	10	15
Rate 1, °C/min.	1.1	1.3
Final temperature 1, °C	114	70
Hold time 2, min.	0	0
Rate 2, °C/min	1.7	1.7
Final temperature 2, °C	250	250
Final hold time 2, min.	5	20
Injector, °C	250	250
Detector, °C	280	280
Carrier gas helium pressure, kPA (psi)	207 (30)	190 (27)
Flow rate (initial isotherm), mL/min.	0.9	0.7
Average linear velocity, cm/s	22	21.5
Injection		
Sample size, µL	0.5	0.3
Splitter vent—flow out, mL/min.	250	200

a split injector, a carrier gas pressure control, and a flame ionization detector which are required.

6.2 *Sample Introduction System*—Manual or automatic liquid syringe sample injection may be employed.

6.3 *Data Acquisition System*—Any data system can be used with a requirement:

6.3.1 Sampling rate of 10 Hz or more with a storage of sampling data for later processing.

6.3.2 Capacity for at least 400 peaks/analysis.

6.3.3 Identification of individual components from retention time; software can be used to automatically identify the peaks with the index system determined from **Table A1.1** or **Table A1.2**.

6.4 *Sampling*—Two millilitres or more crimp-top vials and aluminum caps with polytetrafluoroethylene (PTFE)-lined septa are used to transfer the sample.

6.5 *Capillary Column*—A 50 m fused silica capillary column with an internal diameter of 0.2 mm, containing a 0.5 µm film thickness of bonded dimethylpolysiloxane phase is used. The features must be respected to reproduce the separation of the reference chromatogram. The column must meet the criteria of efficiency, resolution, and polarity defined in Section **10**.

7. Reagents and Materials

7.1 *Carrier Gas and Make-up*, helium, 99.99 mol % pure. (**Warning**—Compressed gas under high pressure.)

7.2 *Fuel Gas*, hydrogen, hydrocarbon free, 99.99 mol % pure. (**Warning**—Compressed gas under high pressure. Extremely flammable.)

7.3 *Oxidizing Gas*, air, 99 mol %. (**Warning**—Compressed gas under high pressure.)

7.4 *n-Pentane*, 99+ mol % pure. (**Warning**—Extremely flammable. Harmful if inhaled.)

7.5 *n-Hexane*, 99+ mol % pure. (**Warning**—Extremely flammable. Harmful if inhaled.)

7.6 *n-Heptane*, 99+ mol % pure. (**Warning**—Extremely flammable. Harmful if inhaled.)

7.7 *2-Methylheptane*, 99+ mol % pure. (**Warning**—Extremely flammable. Harmful if inhaled.)

7.8 *4-Methylheptane*, 99+ mol % pure. (**Warning**—Extremely flammable. Harmful if inhaled.)

³ Withdrawn. The last approved version of this historical standard is referenced on www.astm.org.

7.9 *n*-Octane, 99+ mol % pure. (**Warning**—Extremely flammable. Harmful if inhaled.)

7.10 *n*-Dodecane, 99+ mol % pure. (**Warning**—Extremely flammable. Harmful if inhaled.)

7.11 Toluene, 99+ mol % pure. (**Warning**—Extremely flammable. Harmful if inhaled.)

7.12 *System Performance Mixture*—Weigh an equal amount of *n*-pentane, *n*-heptane, *n*-octane, *n*-dodecane, 2-methylheptane, 4-methylheptane, and toluene. Dilute this mixture in *n*-hexane to obtain a concentration of 2 mass % for each compound.

8. Sampling

8.1 *Container Sampling*—Samples shall be taken as described in Practice D4057 for instructions on manual sampling into open container.

8.2 The sample and a 2-mL vial must be cooled at 4°C. Part of the sample is transferred to the vial up to 80 % of its volume, and aluminum cap with septum is crimped.

9. Preparation of Apparatus

9.1 *Installation*—Install and condition column in accordance with the supplier’s instruction.

9.2 *Operating Conditions*—Two sets of operating conditions are proposed in Table 1, the first with an initial column temperature above the ambient temperature, the second with a sub-ambient column temperature profile. Adjust the operating conditions of the gas chromatograph to conform to the first or second method.

9.3 *Carrier Gas Pressure*—Set a correct carrier gas pressure using the system performance mixture such that the retention time of *n*-Heptane, *n*-Octane and *n*-Dodecane are between the values given in Table 2.

10. System Performance Evaluation

10.1 Evaluation of the column and linearity of the split injection are carried out with a system performance mixture defined in 7.12 and with the column temperature conditions defined in the following table.

Initial temperature	35°C
Hold time	50 min.
Final temperature	220°C
Hold time	20 min.
Rate	3°C/min.

10.2 *Column Evaluation*—To perform the required separation, the column must meet three criteria of separation: efficiency, resolution, and polarity.

10.2.1 *Efficiency*—The number of theoretical plates is calculated with the normal octane peak using Eq 1:

$$n = 5.545(Rt/W_{0.5})^2 \quad (1)$$

where:

n = number of theoretical plates,
 Rt = retention time of normal octane, and
 $W_{0.5}$ = mid-height peak width of normal octane in the same unit as retention time.

10.2.1.1 The number of theoretical plates must be greater than 200 000.

10.2.2 *Resolution*—Resolution is determined between the peaks of 2-methylheptane and 4-methylheptane using Eq 2:

$$R = \frac{2(Rt_{(a)} - Rt_{(b)})}{1.699(W_{0.5(a)} + W_{0.5(b)})} \quad (2)$$

where:

$Rt_{(a)}$ = retention time of 4-methylheptane,
 $Rt_{(b)}$ = retention time of 2-methylheptane,
 $W_{0.5(a)}$ = mid-height peak width of 4-methylheptane in the same unit as retention time, and
 $W_{0.5(b)}$ = mid-height peak width of 2-methylheptane in the same unit as retention time.

10.2.2.1 The resolution must be equal to 4 or greater than 1.20.

10.2.3 *Polarity*—Polarity is defined by the McReynolds constant of toluene, using Eq 3:

$$Rn_{tol} = Ki_{ana} - Ki_{squalane} \quad (3)$$

where:

$Ki_{squalane}$ = toluene Kovats index on Squalane at 35°C = 742.6, and
 Ki_{ana} = toluene Kovats index on the analytical column at 35°C.

10.2.3.1 Toluene Kovats index is calculated using Eq 4:

$$Ki_{ana} = 700 + 100 \left(\frac{\log T'_{R(t)} - \log T'_{R(h)}}{\log T'_{R(o)} - \log T'_{R(h)}} \right) \quad (4)$$

where:

$T'_{R(t)}$ = adjusted retention time for toluene,
 $T'_{R(h)}$ = adjusted retention time for *n*-heptane, and
 $T'_{R(o)}$ = adjusted retention time for *n*-octane.

10.2.3.2 Adjusted retention time of a peak is determined by subtracting the retention time of an unretained compound (air or methane) from the retention time of the peak. The McReynolds constant must be less than 10.

10.2.4 *Base Line Stability*—Base line stability is calculated with the difference between area slices at the beginning and at the end of analysis, divided by the maximum area slice of *N*-octane obtained with the system performance mixture.

10.2.4.1 *Measurement of the Stability*—Carry out one temperature programming defined in 10.1 without injecting any sample. Subtract the area slices at the start of the analysis with those corresponding to 120 min (average of three slices).

10.2.4.2 *Stability Standardization*—Standardization is carried out using the system performance mixture defined in 7.12 with the column temperature conditions defined in 10.1. The value obtained in 10.2.4.1 is divided by the maximum area slice of *N*-octane and multiplied by 100. The value obtained must be less than 2 %. If this is not the case, check for possible

TABLE 2 Reference Retention Times of Normal Paraffins

NOTE—Minutes and tenths of a minute.

	Method 1		Method 2		Method 2	
	Lower Time	Reference Time	Upper Time	Lower Time	Reference Time	Upper Time
<i>n</i> -Paraffins						
<i>n</i> -Heptane	18.5	19.4	20.3	39.5	40.7	42.0
<i>n</i> -Octane	32.0	33.0	34.0	57.0	57.8	59.0
<i>n</i> -Dodecane	92.8	94.0	95.2	106.4	107.6	108.8

leaks, or recondition the column according to the manufacturer's recommendations.

10.3 *Evaluation of the Linearity of the Split Injector*—Evaluation is carried out using the system performance mixture defined in 7.12 with the column temperature conditions defined in 10.1. The % (m/m) of each compound is determined from the corrected area % using the response factors for each compound given in Table A1.1 or Table A1.2. The relative percent error is determined from the known mixture concentrations according to Eq 5:

$$\text{Relative \% error} = \frac{100 (\text{calculated concentration} - \text{known concentration})}{\text{known concentration}} \quad (5)$$

10.3.1 The relative error must not exceed 3 %.

11. Response Factor

11.1 Theoretical response factors are used for correction of the detector response of hydrocarbons. The response factor for each compound is relative to that of benzene taken equal to unity and is listed in Tables 1 and 2. For peaks corresponding to the co-elution of compounds with benzene, toluene, and oxygenates, the response factor is the one of the co-eluted compound of % (m/m). Co-eluted compounds are footnoted in Tables A1.1 and A1.2.

12. Procedure

12.1 *Preparation of Apparatus*—After optimization of the carrier gas pressure (9.3) and evaluation of apparatus (Section 10), set the temperature program corresponding to the selected method (Table 1).

12.2 *Injection of Sample*—Inject with a 5 or 10 µl syringe, manually or by autosampler, the size corresponding to the method (Table 1).

12.3 *Integration of Chromatogram*—Integration codes must be selected to obtain a horizontal baseline with a perpendicular drop to the baseline for partially resolved peaks. An example of correct baseline is given in Figs. A1.1 and A1.2.

12.4 *Identification*—Each peak is identified by matching the retention time with that of compounds listed in Table 1 or Table 2 and standard chromatogram given in Fig. A1.1 or Fig. A1.2. A specific software program using the data of Table 1 or Table 2 can be employed.

12.4.1 If an oxygenate has been determined by Test Methods D4815 or D5599 and is not in the table, it is necessary to prepare a mixture of a weighed amount of this oxygenate in a known spark-ignition engine fuel to determine its retention time and response factor and then add it to the table.

13. Calculation

13.1 *Calculation of % (m/m) of Each Compound Without Co-elution and Not Corrected for Co-elutions*—% (m/m) of each component without co-elution and no corrections of co-elutions is calculated according to Eq 6:

$$C_i' = \frac{A_i B_i}{\sum_{i=0} (A_i B_i + A_{int} B_{int})} 100 \quad (6)$$

where:

- C_i' = % (m/m) of compound i without co-elution and no correction of coelutions,
- A_i = peak area of compound i without co-elution (benzene, toluene, and oxygenates),
- A_{int} = peak area of compounds co-eluting (benzene, toluene, and oxygenates),
- B_i = response factor for component i (given in Table A1.1 or Table A1.2), and
- B_{int} = response factor for components co-eluted with benzene, toluene, and oxygenates.

13.2 *Calculation of Components Coeluted with Benzene, Toluene, and Oxygenates*—Benzene and toluene contents are determined by Test Methods D3606 or D4420 or D5580; oxygenates content is determined by Test Methods D4815 or D5599. The % (m/m) of components coeluted with benzene, toluene, and oxygenates is calculated according Eq 7:

$$C_{coeluted} = C_{int} 0.01 \left[100 - \sum \left(C_{ext} - C_{ext} \times \frac{B_{int}}{B_{ext}} \right) \right] - C_{ext} \times \frac{B_{int}}{B_{ext}} \quad (7)$$

where:

- $C_{coeluted}$ = % (m/m) of component eluted with benzene, toluene, or oxygenates,
- C_{int} = % (m/m) calculated with Eq 6 for the peak with co-elution,
- C_{ext} = % (m/m) of benzene, toluene, or oxygenates determined by other method, and
- B_{ext} = response factor of benzene, toluene, or oxygenates.

13.3 *Calculation of Other Components*—% (m/m) of other components is calculated using Eq 8:

$$C_i = C_i' \frac{100 - \sum C_{coeluted} - \sum C_{ext}}{\sum C_i'} \quad (8)$$

14. Report

14.1 Report the content of each component as % (m/m) to the nearest 0.01 %.

15. Precision⁴

15.1 *Individual Components*—The precision of this test method was determined by a statistical analysis of interlaboratory test results. It applies only to a range from 0.1 to 15 % (m/m), for all components with a resolution greater than 1.0 and without co-elution with oxygenate components. When two components of the same hydrocarbon type have a resolution less than 1.0, the precision can be applied by adding the concentration of two components. The precision is the same for all: (a) light components (saturates and olefins) with a carbon number of 4 and 5, (b) saturates and olefins with a range of carbon number from 6 to 12, and to (c) aromatics. This precision is as follows:

15.1.1 *Repeatability*—The difference between successive test results, obtained by the same operator with the same apparatus under constant operating conditions on identical test

⁴ Supporting data of interlaboratory cooperative study program, statistical analysis, and precision determination are available from ASTM International Headquarters. Request RR: D02:1520.

material, in the normal and correct operation of the test method, would exceed the value given in the **Table 3** in only

TABLE 3 Repeatability and Reproducibility for Individual Components

	Range of Carbon	Range, % (m/m)	Repeatability, X (%(m/m))	Reproducibility, X (% (m/m))
Light Components	C4–C5	0.1–14	$0.04 \cdot X$	$0.16 \cdot X$
Paraffins	C6–C12	0.1–11.5	$0.01 + 0.03 \cdot X$	$0.04 + 0.07 \cdot X$
Naphthenes	C6–C8	0.1–3		
Olefins	C6–C8	0.1–1		
Aromatics	C6–C12	0.1–14	$0.05 + 0.02 \cdot X$	$0.1 + 0.06 \cdot X$

one case in twenty.

15.1.2 *Reproducibility*—The difference between two single and independent results, obtained by different operators in different laboratories on nominally identical test material, in the normal and correct operation of the test method, would exceed the values given in the **Table 3** in only one case in twenty.

16. Keywords

16.1 detailed hydrocarbon analysis; DHA; gas chromatography; gasoline; hydrocarbons; open tubular; oxygenates; spark ignition engine fuels

ANNEX

(Mandatory Information)

A1. METHOD 1, PEAK NUMBER, RETENTION TIME, RESPONSE FACTOR, HYDROCARBON TYPE, AND CARBON NUMBER

A1.1 **Table A1.1** and **Table A1.2** include Method 1/Method 2 peak numbers, retention time, response factor, hydrocarbon type, and carbon number for each component. **Fig. A1.1** and

Fig. A1.2 include Method 1/Method 2 reference chromatograms.

TABLE A1.1 Method 1—Peak Numbers, Retention Time, Response Factor, Hydrocarbon Type and Carbon Number for Each Component

NOTE—Legend—Hydrocarbon types—NP = normal paraffins, IP = isoparaffins, NA = naphthenes, OL = olefins, AR = aromatics, Ox = oxygenates.

Nb	Compounds	Retention, min.	Response Factor	Hydrocarbon Type	Carbon No.
1	Propane	4.14	1.125	Ip	3
2	Isobutane ^A	4.47	1.112	Ip	4
2	Methanol ^A	4.47	2.850	Ox	1
3	Isobutene+1-butene	4.66	1.075	OI	4
4	N-butane	4.74	1.112	NP	4
5	Trans-2-butene	4.84	1.075	OI	4
6	C ₄ -diolefin	4.88	1.045	OL	4
7	CIS-2-butene	5.00	1.075	OL	4
8	Ethanol	5.17	2.300	OX	2
9	3-Methyl-1-butene	5.45	1.075	OL	5
10	Isopentane	5.76	1.105	IP	5
11	1-pentene	6.05	1.075	OL	5
12	2-Methyl-1-butene	6.20	1.075	OL	5
13	N-Pentane	6.31	1.105	NP	5
14	Isoprene	6.43	1.075	OL	5
15	Trans-2-pentene	6.49	1.075	OL	5
16	Tertiobutylalcohol	6.60	1.490	OX	5
17	CIS-2-pentene	6.70	1.075	OL	5
18	2-Methyl-2-butene	6.84	1.075	OL	5
19	1,Trans-3-pentadiene	6.91	1.075	OL	5
20	1,CIS-3-pentadiene	7.28	1.075	OL	5
21	2,2-Dimethylbutane	7.36	1.100	IP	6
22	1-Cyclopentene	7.99	1.075	OL	5
23	4-Methyl-1-pentene	8.12	1.075	OL	6
24	3-Methyl-1-pentene	8.19	1.075	OL	6
25	Cyclopentane ^A	8.46	1.075	NA	5
25	MTBE ^A	8.46	1.520	OX	5
26	2,3-Dimethylbutane	8.52	1.100	IP	6
27	4-Methyl-CIS-2-pentene	8.61	1.075	OL	6
28	2-Methylpentane	8.70	1.100	IP	6
29	4-Methyl-trans-2-pentene	9.04	1.075	OL	6
30	3-Methylpentane	9.41	1.100	IP	6
31	2-Methyl-1-pentene	9.66	1.075	OL	6
32	1-Hexene	9.70	1.075	OL	6
33	2-Ethyl-1-butene	10.32	1.075	OL	6
34	N-Hexane	10.40	1.110	NP	6
35	Trans-3-hexene	10.51	1.075	OL	6
36	CIS-3-hexene	10.59	1.075	OL	6
37	Trans-2-hexene	10.69	1.075	OL	6
38	2-Methyl-2-pentene	10.84	1.075	OL	6
39	4-Methyl-1-cyclopentene	10.99	1.075	OL	6
40	3-Methyl-trans-2-pentene	11.06	1.075	OL	6
41	3-Methyl-1-cyclopentene	11.19	1.075	OL	6
42	CIS-2-Hexene	11.31	1.075	OL	6
43	C ₆ -olefin	11.46	1.075	OL	6
44	ETBE	11.62	1.520	OX	6
45	3-Methyl-CIS-2-pentene	11.74	1.075	OL	6
46	2,2-Dimethylpentane	12.06	1.099	IP	7
47	1-Methylcyclopentane	12.23	1.075	NA	6
48	2,4-Dimethylpentane	12.53	1.099	IP	7
49	C ₆ -olefin	12.78	1.075	OL	6
50	2,2,3-Trimethylbutane	13.93	1.099	IP	7
51	C ₆ -olefin	13.08	1.075	OL	6
52	C ₇ -olefin	13.45	1.075	OL	7
53	C ₇ -olefin	13.56	1.075	OL	7
54	C ₇ -olefin	13.84	1.075	OL	7
55	C ₇ -olefin	13.93	1.075	OL	7
56	Benzene ^A	14.08	1.000	AR	6
56	1-Methyl-1-cyclopentene ^A	14.08	1.075	OL	6
57	C ₇ -olefin	14.23	1.075	OL	7
58	C ₇ -olefin	14.36	1.075	OL	7
59	3,3-Dimethylpentane	14.61	1.099	IP	7
60	C ₇ -olefin	14.77	1.075	OL	7
61	Cyclohexane	14.93	1.075	NA	6
62	C ₇ -olefin	15.13	1.075	OL	7
63	C ₇ -olefin	15.24	1.075	OL	7
64	C ₇ -olefin	15.44	1.075	OL	7
65	C ₇ -olefin	15.68	1.075	OL	7
66	2-Methylhexane	15.84	1.099	IP	7
67	2,3-Dimethylpentane	15.99	1.099	IP	7
68	1,1-Dimethylcyclopentane	16.24	1.075	NA	7
69	Cyclohexene	16.44	1.075	OL	6

TABLE A1.1 *Continued*

Nb	Compounds	Retention, min.	Response Factor	Hydrocarbon Type	Carbon No.
70	3-Methylhexane	16.70	1.099	IP	7
71	C ₇ -olefin	17.04	1.075	OP	7
72	CIS-1,3-dimethylcyclopentane	17.32	1.075	NA	7
73	Trans-1,3-dimethylcyclopentane	17.61	1.075	NA	7
74	3-ethylpentane	17.76	1.099	IP	7
75	Trans-1,2-dimethylcyclopentane	17.92	1.075	NA	7
76	2,2,4-Trimethylpentane	18.16	1.096	IP	8
76	C ₇ -olefin	18.16	1.075	OL	7
77	C ₇ -olefin	18.74	1.075	OL	7
78	C ₇ -olefin	19.13	1.075	OL	7
79	N-heptane	19.36	1.099	NP	7
80	C ₇ -olefin	19.57	1.075	OL	7
81	C ₇ -olefin	19.69	1.075	OL	7
82	C ₇ -olefin	19.90	1.075	OL	7
83	C ₇ -olefin	20.08	1.075	OL	7
84	C ₇ -olefin	20.47	1.075	OL	7
85	C ₇ -olefin	20.87	1.075	OL	7
86	C ₇ -olefin	21.30	1.075	OL	7
87	C ₇ -olefin	21.53	1.075	OL	7
88	1-Methylcyclohexane	21.61	1.075	NA	7
88	CIS-1,2-dimethylcyclopentane	21.61	1.075	NA	7
89	1,1,3-Trimethylcyclopentane	22.02	1.075	NA	8
89	2,2-Dimethylhexane	22.02	1.096	IP	8
90	C ₈ -olefin	22.49	1.075	OL	8
91	C ₈ -olefin	22.70	1.075	OL	8
92	1-ethylcyclopentane	23.09	1.075	NA	7
93	2,2,3-Trimethylpentane	23.33	1.096	IP	8
93	2,5-Dimethylhexane	23.33	1.096	IP	8
94	2,4-Dimethylhexane	23.57	1.096	IP	8
95	1,trans2,CIS4-trimethylcyclopentane	24.24	1.075	NA	8
96	3,3-Dimethylhexane	24.44	1.096	IP	8
97	C ₈ -olefin	24.94	1.075	OL	8
98	1,Trans2,CIS3-trimethylcyclopentane	25.21	1.075	NA	8
99	2,3,4-Trimethylpentane	25.64	1.096	IP	8
100	2,3,3-Trimethylpentane	26.17	1.096	IP	8
100	Toluene	26.17	1.008	AR	7
101	C ₈ -olefin	26.38	1.075	OL	8
102	C ₈ -olefin	26.67	1.075	OL	8
103	C ₈ -olefin	26.79	1.075	OL	8
104	2,3-Dimethylhexane	27.16	1.096	IP	8
105	2-Methyl-3-ethylpentane	27.30	1.096	IP	8
106	C ₈ -olefin	27.54	1.075	OL	8
107	2-Methylheptane	28.02	1.096	IP	8
108	4-Methylheptane	28.23	1.096	IP	8
109	3,4-Dimethylhexane	28.36	1.096	IP	8
110	1,CIS2,Trans4-trimethylcyclopentane	28.41	1.075	NA	8
111	C ₈ -olefin	28.76	1.075	OL	8
112	3-Methylheptane	29.08	1.096	IP	8
113	3-Ethylhexane	29.22	1.096	IP	8
114	1,CIS-3-dimethylcyclohexane	29.46	1.075	NA	8
114	1,Trans-4-dimethylcyclohexane	29.46	1.075	NA	8
114	1,CIS2,Trans3-trimethylcyclopentane	29.46	1.075	NA	8
115	C ₈ -olefin	29.81	1.075	OL	8
116	1,1-Dimethylcyclohexane	30.01	1.075	NA	8
117	C ₈ -olefin	30.24	1.075	OL	8
118	2,2,5-Trimethylhexane	30.67	1.093	IP	8
119	1-ME-T3-ethylcyclopentane	30.81	1.075	NA	8
119	C ₈ -olefin	30.81	1.075	OL	8
120	1-Methyl-CIS-3-ethylcyclopentane	31.11	1.075	NA	8
120	C ₈ -olefin	31.11	1.075	OL	8
121	1-Methyl-trans-2-ethylcyclopentane	31.29	1.075	NA	8

TABLE A1.1 *Continued*

Nb	Compounds	Retention, min.	Response Factor	Hydrocarbon Type	Carbon No.
121	C ₈ -olefin	31.29	1.075	OL	8
122	1-Methyl-1-ethylcyclopentane	31.43	1.075	NA	8
122	C ₈ -olefin	31.43	1.075	OL	8
123	1,Trans-2-dimethylcyclopentane	31.68	1.075	OL	7
124	C ₈ -olefin	31.97	1.075	OL	8
125	C ₈ -olefin	32.17	1.075	OL	8
126	C ₈ -olefin	32.58	1.075	OL	8
127	C ₈ -olefin	32.81	1.075	OL	8
128	C ₈ -naphthene	33.01	1.075	NA	8
128	N-octane	33.01	1.096	NP	8
129	C ₈ -olefin	33.56	1.075	OL	8
130	C ₈ -olefin	33.81	1.075	OL	8
131	2,2,4-Trimethylhexane	34.04	1.093	IP	9
132	C ₈ -olefin	34.76	1.075	OL	8
133	C ₈ -olefin	34.93	1.075	OL	8
134	C ₈ -olefin	35.15	1.075	OL	8
135	2,3,5-Trimethylhexane	35.46	1.093	IP	9
136	2,2-Dimethylheptane	35.67	1.093	IP	9
137	1,CIS-2-Dimethylcyclohexane	36.02	1.075	NA	8
138	C ₉ -olefin	36.25	1.075	OL	9
139	2,4-Dimethylheptane	36.65	1.093	IP	9
140	4,4-Dimethylheptane	36.91	1.093	IP	9
141	C ₉ -olefin	37.17	1.075	OL	9
142	1-Ethylcyclohexane	37.35	1.075	NA	8
143	C ₉ -olefin	37.52	1.075	OL	9
144	2,6-Dimethylheptane	37.66	1.093	IP	8
145	C ₉ -naphthene	37.93	1.075	NA	9
146	C ₉ -naphthene	38.05	1.075	NA	9
147	C ₉ -naphthene	38.21	1.075	NA	9
148	2,5-Dimethylheptane	38.68	1.093	IP	9
149	C ₉ -olefin	38.87	1.075	OL	8
150	C ₈ -olefin	39.05	1.075	OL	8
151	C ₈ -olefin	39.23	1.075	OL	8
152	C ₈ -olefin	39.46	1.075	OL	8
153	C ₈ -olefin	39.80	1.075	OL	8
154	ethylbenzene	40.19	1.018	AR	8
155	C ₈ -olefin	40.41	1.075	OL	8
156	C ₉ -naphthene	40.60	1.075	NA	9
157	C ₉ -naphthene	40.89	1.075	NA	9
158	C ₈ -olefin	41.09	1.075	OL	8
159	C ₈ -olefin	41.24	1.075	OL	8
160	Metaxylene	41.69	1.018	AR	8
161	Paraxylene	41.83	1.018	AR	8
162	C ₉ -naphthene	42.20	1.075	NA	9
163	3,4-Dimethylheptane	42.32	1.093	IP	9
164	4-Ethylheptane	42.68	1.093	IP	9
165	C ₉ -olefin	42.91	1.075	OL	8
166	4-Methyloctane	43.16	1.093	IP	9
167	2-Methyloctane	43.33	1.093	IP	9
168	C ₉ -naphthene	43.51	1.075	NA	9
169	C ₉ -naphthene	43.71	1.075	NA	9
170	3-Ethylheptane	44.21	1.093	IP	9
171	3-Methyloctane	44.43	1.093	IP	9
172	Orthoxylene	45.12	1.018	AR	8
173	C ₉ -naphthene	45.33	1.075	NA	9
174	C ₉ -naphthene	45.66	1.075	NA	9
175	C ₉ -naphthene	46.08	1.075	NA	9
176	C ₁₀ -isoparaffin	46.26	1.086	IP	10
177	C ₁₀ -isoparaffin	46.58	1.086	IP	10
178	C ₁₀ -isoparaffin	46.72	1.086	IP	10
179	C ₁₀ -isoparaffin	46.98	1.086	IP	10
180	C ₁₀ -isoparaffin	47.29	1.086	IP	10
181	C ₉ -naphthene	47.80	1.075	NA	9
182	C ₉ -naphthene	48.10	1.075	NA	9
183	C ₉ -naphthene	48.40	1.075	NA	9
184	C ₉ -naphthene	48.68	1.075	NA	9
185	N-nonane	48.85	1.093	NP	9
186	C ₉ -olefin	49.25	1.075	OL	9
187	C ₉ -olefin	49.50	1.075	OL	9
188	C ₉ -olefin	49.70	1.075	OL	9
189	isopropylbenzene	50.34	1.025	AR	9

TABLE A1.1 *Continued*

Nb	Compounds	Retention, min.	Response Factor	Hydrocarbon Type	Carbon No.
190	C ₉ -olefin	50.59	1.075	OL	9
191	C ₉ -naphthene	50.81	1.025	NA	9
192	C ₉ -olefin	51.01	1.075	OL	9
193	C ₉ -olefin	51.24	1.075	OL	9
194	C ₁₀ -isoparaffin	51.59	1.086	IP	10
195	C ₁₀ -isoparaffin	51.93	1.086	IP	10
196	C ₁₀ -isoparaffin	52.18	1.086	IP	10
197	C ₉ -naphthene	52.62	1.075	NA	9
198	C ₁₀ -isoparaffin	52.85	1.086	IP	10
199	C ₁₀ -isoparaffin	53.08	1.086	IP	10
200	C ₁₀ -naphthene	53.35	1.025	NA	10
201	2,7-Dimethyloctane	53.78	1.086	IP	9
202	C ₁₀ -isoparaffin	54.23	1.086	IP	10
203	2,6-Dimethyloctane	54.51	1.086	IP	9
204	3,3-Dimethyloctane	54.80	1.086	IP	9
205	N-propylbenzene	55.07	1.025	AR	9
206	3,6-Dimethyloctane	55.34	1.086	IP	9
207	C ₁₀ -isoparaffin	55.41	1.086	IP	10
208	C ₁₀ -isoparaffin	55.66	1.086	IP	10
209	1-Methyl,3-ethylbenzene	56.40	1.025	AR	9
210	1-Methyl,4-ethylbenzene	56.68	1.025	AR	9
211	C ₁₀ -isoparaffin	57.30	1.086	IP	10
212	1,3,5-Trimethylbenzene	57.61	1.025	AR	9
213	4-Ethyloctane	57.94	1.086	IP	10
214	C ₁₀ -isoparaffin	58.20	1.086	IP	10
215	C ₁₀ -isoparaffin	58.28	1.086	IP	10
216	5-Methylnonane	58.64	1.086	IP	10
217	1-Methyl,2-ethylbenzene	59.03	1.025	AR	9
217	4-Methylnonane	59.03	1.086	IP	10
218	2-Methylnonane	59.34	1.086	IP	10
219	C ₁₀ -naphthene	59.56	1.075	NA	10
220	3-Ethyloctane	59.84	1.086	IP	10
221	C ₁₀ -isoparaffin	60.19	1.086	IP	10
222	3-Methylnonane	60.41	1.086	IP	10
223	C ₁₀ -naphthene	60.61	1.075	NA	10
224	C ₁₀ -naphthene	61.06	1.075	NA	10
225	1,2,4-Trimethylbenzene	61.55	1.025	AR	9
226 to 232	C ₁₁ -isoparaffin	from 62.00 to 64.10	1.086	Ip	11
233	C ₁₀ -aromatic	64.29	1.025	AR	10
234	C ₁₀ -aromatic	64.64	1.025	AR	10
235	N-decane	64.86	1.086	NP	10
236	C ₁₁ -isoparaffin	65.18	1.086	IP	11
237	1,2,3-Trimethylbenzene	65.63	1.025	AR	9
238	1-Methyl,4- isopropylbenzene	66.08	1.025	AR	10
239	1-Methyl,3- isopropylbenzene	66.47	1.025	AR	10
240	C ₁₁ -isoparaffin	66.95	1.086	IP	11
241	Indan	67.24	1.025	AR	9
242	C ₁₁ -isoparaffin	67.53	1.086	IP	11
243	C ₁₁ -isoparaffin	67.74	1.086	IP	11
244	1-Methyl,2- isopropylbenzene	68.13	1.025	AR	10
245	2,6-Dimethylnonane	68.43	1.025	IP	10
246	C ₁₁ -isoparaffin	68.65	1.086	IP	11
247	C ₁₁ -isoparaffin	69.19	1.086	IP	11
248	C ₁₁ -isoparaffin	69.98	1.086	IP	11
249	1,3-Diethylbenzene	70.16	1.030	AR	10
250	1-Methyl,3N-propylbenzene	70.58	1.030	AR	10
251	C ₁₀ -aromatic	70.76	1.025	AR	10
252	1-Methyl,4N-propylbenzene	71.13	1.030	AR	10
253	C ₁₀ -aromatic	71.43	1.025	AR	10
254	1,3-Dimethyl,5- ethylbenzene	71.64	1.030	AR	10
255	1,4-Diethylbenzene	71.89	1.030	AR	10
256	C ₁₂ -isoparaffine	72.36	1.086	IP	12
257	1-Methyl,2N-propylbenzene	72.84	1.030	AR	10
258	C ₁₂ -isoparaffin	73.18	1.086	IP	12
259	C ₁₂ -isoparaffin	73.71	1.086	IP	12
260	C ₁₂ -isoparaffin	73.99	1.086	IP	12
261	1,4-Dimethyl,2- ethylbenzene	74.44	1.030	AR	10

TABLE A1.1 *Continued*

Nb	Compounds	Retention, min.	Response Factor	Hydrocarbon Type	Carbon No.
262	1,3-Dimethyl,4-ethylbenzene	74.69	1.030	AR	10
263	C ₁₂ -isoparaffin	75.13	1.086	IP	12
264	1-Methylindan	75.35	1.030	AR	10
265	1,2-Dimethyl,4-ethylbenzene	75.61	1.030	AR	10
266	1,3-Dimethyl-2-ethylbenzene	76.08	1.030	AR	10
267	C ₁₁ -isoparaffin	76.45	1.086	IP	11
268 to 271	C ₁₂ -isoparaffin	from 76.64 to 78.20	1.086	IP	12
272	1,2-Dimethyl-3-ethylbenzene	78.51	1.030	AR	10
273	C ₁₀ -naphthene	78.73	1.075	NA	10
274	C ₁₂ -isoparaffin	78.92	1.086	IP	12
275	C ₁₂ -isoparaffin	79.32	1.086	IP	12
276	C ₁₂ -isoparaffin	79.62	1.086	IP	12
277	N-undecane	80.17	1.086	NP	11
278	1,2,4,5-Tetramethylbenzene	80.39	1.030	AR	10
279	1,2,3,5-Tetramethylbenzene	80.89	1.030	AR	10
280	C ₁₂ -isoparaffin	81.28	1.086	IP	12
281 to 286	C ₁₁ -naphthene	from 81.53 to 83.00	1.075	NA	11
287	5-Methylindan	83.21	1.030	AR	10
288	C ₁₁ -aromatic	83.45	1.030	AR	11
289	C ₁₁ -aromatic	83.90	1.033	AR	11
290	C ₁₁ -aromatic	84.26	1.033	AR	11
291	4-Methylindan	84.60	1.030	AR	10
292	C ₁₁ -aromatic	84.83	1.033	AR	11
293	C ₁₁ -aromatic	85.07	1.033	AR	11
294	1,2,3,4-Tetramethylbenzene	85.28	1.030	AR	10
295 to 302	C ₁₁ -aromatic	from 85.64 to 87.70	1.033	AR	11
303	C ₁₂ -isoparaffin	87.86	1.086	IP	12
304	C ₁₂ -isoparaffin	88.09	1.086	IP	12
305	Naphthalene	88.33	1.030	AR	10
306	C ₁₂ -isoparaffin	88.52	1.086	IP	12
307	C ₁₂ -isoparaffin	88.92	1.086	IP	12
308	C ₁₁ -aromatic	89.15	1.033	AR	11
309	C ₁₂ -isoparaffin	89.39	1.086	IP	12
310	C ₁₂ -isoparaffin	89.61	1.086	IP	12
311	C ₁₁ -aromatic	89.94	1.033	AR	11
312	C ₁₂ -isoparaffin	90.12	1.086	IP	12
313 to 320	C ₁₁ -aromatic	from 90.40 to 93.30	1.033	AR	11
321	N-dodecane	93.50	1.086	NP	12
322	C ₁₃ -isoparaffin	93.81	1.033	IP	13
323 to 337	C ₁₁ -aromatic	from 94.23 to 98.06	1.033	AR	11
338 to 340	C ₁₁ +aromatic	from 98.30 to 99.30	1.033	AR	11+
341 to 347	C ₁₃ -isoparaffin	from 99.46 to 101.30	1.033	AR	11+
348	2-Methylnaphthalene	101.54	1.033	AR	11
349 to 352	C ₁₁ +aromatic	from 101.70 to 103.00	1.033	AR	11+
353	1-Methylnaphthalene	103.15	1.033	AR	11
354 and +	Hydrocarbon C ₁₂ +	>103.20	1.035		

^A Co-eluted compounds.

TABLE A1.2 Method 2–Peak Number, Retention Time, Response Factor, Hydrocarbon Type and Carbon Number for Each Component

Nb	Compounds	Retention, min.	Response Factor	Hydrocarbon Type	Carbon No.
1	Propane	5.08	1.125	IP	3
2	Isobutane	5.84	1.112	IP	4
3	Methanol	6.06	2.850	OX	1
4	Isobutene+1-butene	6.33	1.075	OL	4
5	N-butane	6.55	1.112	NP	4
6	Trans-2-butene	6.83	1.075	OL	4
7	C ₄ -diolefin	6.92	1.045	OL	4
8	CIS-2-butene	7.25	1.075	OL	4
9	Ethanol	8.10	2.300	OX	2
10	3-Methyl-1-butene	8.51	1.075	OL	5
11	Isopentane	9.40	1.105	IP	5
12	1-Pentene	10.33	1.075	OL	5
13	2-Methyl-1-butene	10.78	1.075	OL	5
14	N-pentane	11.12	1.105	NP	5
15	Isoprene	11.45	1.045	OL	5
16	Trans-2-pentene	11.77	1.075	OL	5
17	C ₅ -diene	12.20	1.045	OL	5
18	CIS-2-pentene ^A	12.40	1.075	OL	5
18	Tertiobutylalcohol ^A	12.40	1.490	OX	5
19	2-Methyl-2-butene	12.82	1.075	OL	5
20	1,Trans-3-pentadiene	13.04	1.075	OL	5
21	1,CIS-3-pentadiene	13.94	1.075	OL	5
22	2,2-Dimethylbutane	14.28	1.100	IP	6
23	1-Cyclopentene	16.14	1.075	OL	5
24	4-Methyl-1-pentene	16.90	1.075	OL	6
25	3-Methyl-1-pentene	17.00	1.075	OL	6
26	Cyclopentane	17.49	1.075	NA	5
27	2,3-Dimethylbutane	17.95	1.100	IP	6
28	MTBE	18.11	1.520	OX	5
29	4-Methyl-CIS-2-pentene	18.52	1.075	OL	6
30	2-Methylpentane	18.68	1.100	IP	6
31	4-Methyl-trans-2-pentene	18.98	1.075	OL	6
32	3-Methylpentane	20.64	1.100	IP	6
33	2-Methyl-1-pentene	21.47	1.075	OL	6
34	1-Hexene	21.64	1.075	OL	6
35	2-Ethyl-1-butene	23.30	1.075	OL	6
36	N-hexane	23.39	1.110	NP	6
37	Trans-3-hexene	23.84	1.075	OL	6
37	CIS-3-hexene	23.84	1.075	OL	6
38	Trans-2-hexene	24.20	1.075	OL	6
39	4-Methyl-1-cyclopentene	24.42	1.075	OL	6
40	2-Methyl-2-pentene	24.58	1.075	OL	6
41	3-Methyl-Trans-2-pentene	24.92	1.075	OL	6
41	3-Methyl-1-cyclopentene	24.92	1.075	OL	6
42	CIS- ₂ -hexene	25.62	1.075	OL	6
43	C ₆ -olefin	25.93	1.075	OL	6
44	3-Methyl-CIS-2-pentene	26.64	1.075	OL	6
45	ETBE	26.75	1.520	OX	6
46	2,2-Dimethylpentane	27.15	1.099	IP	6
46	1-Methylcyclopentane	27.15	1.075	NA	6
47	C ₆ -olefin	27.66	1.075	OL	6
48	2,4-Dimethylpentane	28.28	1.099	IP	7
48	C ₆ -olefin	28.28	1.075	OL	6
49	C ₆ -olefin	28.58	1.075	OL	6
50	2,2,3-Trimethylbutane	28.79	1.099	IP	7
51	C ₆ -olefin	29.14	1.075	OL	6
52	C ₇ -olefin	29.27	1.075	OL	7
53	C ₇ -olefin	30.11	1.075	OL	7
54	C ₇ -olefin	30.82	1.075	OL	7
55	Benzene ^A	31.01	1.000	AR	6
55	1-Methyl-1-cyclopentene ^A	31.01	1.075	OL	6
56	C ₇ -olefin	31.72	1.075	OL	7
57	3,3-Dimethylpentane	32.20	1.075	IP	7
58	Cyclohexane	32.50	1.075	NA	6
59	C ₇ -olefin	32.76	1.075	OL	7
60	C ₇ -olefin	32.95	1.075	OL	7
61	C ₇ -olefin	33.30	1.075	OL	7
62	C ₇ -olefin	33.46	1.075	OL	7
63	C ₇ -olefin	33.72	1.075	OL	7
64	C ₇ -olefin	34.03	1.075	OL	7
65	C ₇ -olefin	34.51	1.075	OL	7
66	2-Methylhexane	34.81	1.099	IP	7
66	2,3-Dimethylpentane	34.81	1.099	IP	7
66	1,1-Dimethylcyclopentane	34.81	1.075	NA	7

TABLE A1.2 *Continued*

Nb	Compounds	Retention, min.	Response Factor	Hydrocarbon Type	Carbon No.
67	Cyclohexene	35.28	1.075	OL	7
68	3-Methylhexane	36.23	1.099	IP	7
69	C ₇ -olefin	36.95	1.075	OL	7
69	CIS-1,3-dimethylcyclopentane	36.95	1.075	NA	7
70	Trans-1,3-dimethylcyclopentane	37.42	1.075	NA	7
71	3-Ethylpentane	37.92	1.099	IP	7
72	Trans-1,2-dimethylcyclopentane	38.10	1.075	NA	7
73	2,2,4-Trimethylpentane	38.42	1.096	IP	8
74	C ₇ -olefin	38.58	1.075	OL	7
75	C ₇ -naphthene	38.68	1.075	NA	7
76	C ₇ -olefin	39.21	1.075	OL	7
77	C ₇ -olefin	39.63	1.075	OL	7
78	C ₇ -olefin	40.05	1.075	OL	7
79	C ₇ -olefin	40.31	1.075	OL	7
80	N-heptane	40.58	1.099	NP	7
81	C ₇ -olefin	40.77	1.075	OL	7
82	C ₇ -olefin	40.97	1.075	OL	7
83	C ₇ -olefin	41.17	1.075	OL	7
84	C ₇ -olefin	41.46	1.075	OL	7
85	C ₇ -olefin	41.63	1.075	OL	7
86	C ₇ -olefin	41.87	1.075	OL	7
87	C ₇ -olefin	42.03	1.075	OL	7
88	C ₇ -olefin	42.17	1.075	OL	7
89	C ₇ -olefin	42.62	1.075	OL	7
90	C ₇ -olefin	42.79	1.075	OL	7
91	C ₇ -olefin	43.09	1.075	OL	7
92	1-Methylcyclohexane	43.32	1.075	NA	7
92	CIS-1,2-dimethylcyclopentane	43.32	1.075	NA	7
93	1,1,3-Trimethylcyclopentane	44.07	1.075	NA	8
94	2,2-Dimethylhexane	44.34	1.096	IP	8
95	C ₈ -olefin	44.92	1.075	OL	8
96	C ₈ -olefin	45.30	1.075	OL	8
97	1-Ethylcyclopentane	45.51	1.075	NA	7
98	2,2,3-Trimethylpentane	46.00	1.096	IP	8
99	2,5-Dimethylhexane	46.15	1.096	IP	8
100	2,4-Dimethylhexane	46.43	1.096	IP	8
101	1,Trans2,CIS4-trimethylcyclopentane	47.12	1.075	NA	8
102	3,3-Dimethylhexane	47.44	1.096	IP	8
103	C ₈ -olefin	47.64	1.075	OL	8
104	C ₈ -olefin	48.19	1.075	OL	8
105	1,Trans2,CIS3-trimethylcyclopentane	48.38	1.075	NA	8
106	C ₈ -olefin	48.63	1.075	OL	8
107	2,3,4-Trimethylpentane	48.92	1.096	IP	8
108	2,3,4-Trimethylpentane ^A	49.50	1.096	IP	8
108	Toluene ^A	49.50	1.008	AR	7
109	C ₈ -olefin	50.07	1.075	OL	8
110	C ₈ -olefin	50.32	1.075	OL	8
111	C ₈ -olefin	50.54	1.075	OL	8
112	C ₈ -olefin	50.67	1.075	OL	8
113	2,3-Dimethylhexane	50.91	1.096	IP	8
114	2-Methyl-3-ethylpentane	51.23	1.096	IP	8
115	C ₈ -naphthene	51.34	1.075	NA	8
116	2-Methylheptane	52.04	1.096	IP	8
117	4-Methylheptane	52.27	1.096	IP	8
118	3,4-Dimethylhexane	52.34	1.096	IP	8
119	C ₈ -olefin	52.60	1.075	OL	8
120	C ₈ -olefin	52.95	1.075	OL	8
121	3-Methylheptane	53.26	1.096	IP	8
122	1,CIS-3-dimethylcyclohexane	53.40	1.075	NA	8
122	1,Trans-4-dimethylcyclohexane	53.40	1.075	NA	8
122	1,CIS2,Trans3-trimethylcyclopentane	53.40	1.075	NA	8
123	C ₈ -olefin	53.87	1.075	OL	8
124	C ₈ -olefin	54.08	1.075	OL	8
125	C ₈ -olefin	54.34	1.075	OL	8

TABLE A1.2 *Continued*

Nb	Compounds	Retention, min.	Response Factor	Hydrocarbon Type	Carbon No.
126	C ₈ -olefin	54.73	1.075	OL	8
127	2,2,5-Trimethylhexane	55.06	1.093	IP	9
128	1-Me-T3-ethylcyclopentane	55.42	1.075	NA	8
128	C ₈ -olefin	55.42	1.075	NA	8
129	1-Methyl-CIS-3-ethylcyclopentane	55.63	1.075	NA	8
129	C ₈ -olefin	55.42	1.075	OL	8
130	1-Methyl-Trans-2-ethylcyclopentane	55.84	1.075	NA	8
130	C ₈ -olefin	55.84	1.075	OL	8
131	1-Methyl-1-ethylcyclopentane	55.94	1.075	NA	8
131	C ₈ -olefin	55.94	1.075	OL	8
132	1, Trans-2-dimethylcyclopentane	56.29	1.075	NA	8
133	C ₈ -olefin	56.50	1.075	OL	8
134	C ₈ -olefin	56.80	1.075	OL	8
135	C ₈ -olefin	57.24	1.075	OL	8
136	C ₈ -naphthene	57.70	1.075	NA	8
136	N-Octane	57.70	1.096	NP	8
137	C ₈ -olefin	58.32	1.075	OL	8
138	C ₈ -olefin	58.50	1.075	OL	8
139	C ₈ -olefin	58.66	1.075	OL	8
140	2,2,4-Trimethylhexane	58.82	1.093	IP	9
141	C ₈ -olefin	59.59	1.075	OL	8
142	2,3,5-Trimethylhexane	60.28	1.093	IP	9
143	C ₈ -olefin	60.40	1.075	OL	8
144	2,2-Dimethylheptane	60.89	1.093	IP	9
145	C ₈ -olefin	61.07	1.075	OL	8
146	1,CIS-2-Dimethylcyclohexane	61.31	1.075	NA	8
147	2,4-Dimethylheptane	61.54	1.093	IP	9
148	C ₈ -olefin	61.77	1.075	OL	8
149	1-Ethylcyclohexane	62.17	1.075	NA	8
150	C ₉ -naphthene	62.42	1.075	NA	9
151	2,6-Dimethylheptane	62.59	1.093	IP	9
152	C ₉ -naphthene	63.02	1.075	NA	9
153	2,5-Dimethylheptane	63.60	1.093	IP	9
154	C ₈ -olefin	63.79	1.075	IP	9
155	C ₈ -olefin	64.10	1.075	OL	8
156	C ₈ -olefin	64.33	1.075	OL	8
157	ethylbenzene	65.02	1.018	OL	8
158	C ₉ -naphthene	65.40	1.075	AR	8
159	C ₈ -olefin	65.77	1.075	OL	8
160	Metaxylene	66.46	1.018	AR	8
161	Paraxylene	66.60	1.018	AR	8
162	C ₉ -naphthene	66.97	1.075	NA	9
163	3,4-Dimethylheptane	67.08	1.093	IP	9
164	4-Ethylheptane	67.42	1.093	IP	9
165	4-Methyloctane	67.89	1.093	IP	9
166	2-Methyloctane	68.04	1.093	IP	9
167	C ₉ -isoparaffin	68.78	1.075	IP	9
168	3-Ethylheptane	68.97	1.093	IP	9
168	3-Methyloctane	68.97	1.093	IP	9
169	Orthoxylene	69.65	1.018	AR	8
170	C ₉ -naphthene	70.12	1.075	NA	9
171	C ₉ -naphthene	70.52	1.075	NA	9
172	C ₁₀ -isoparaffin	70.68	1.086	IP	10
173	C ₁₀ -isoparaffin	71.05	1.086	IP	10
174	C ₁₀ -isoparaffin	71.58	1.086	IP	10
175	C ₉ -olefin	71.99	1.075	OL	9
176	C ₉ -olefin	72.23	1.075	OL	9
177	C ₉ -naphthene	72.47	1.075	NA	9
178	C ₉ -naphthene	72.88	1.075	NA	9
178	N-nonane	72.88	1.093	NP	9
179	C ₉ -naphthene	73.29	1.075	NA	9
180	C ₉ -olefin	73.68	1.075	OL	9
181	isopropylbenzene	74.23	1.025	AR	9
182	C ₁₀ -isoparaffin	74.71	1.025	IP	10
183	C ₁₀ -isoparaffin	75.19	1.086	IP	10
184	C ₁₀ -isoparaffin	75.46	1.086	IP	10
185	C ₁₀ -isoparaffin	76.20	1.086	IP	10
186	C ₁₀ -isoparaffin	76.41	1.086	IP	10
187	2,7-Dimethyloctane	77.05	1.086	IP	10

TABLE A1.2 *Continued*

Nb	Compounds	Retention, min.	Response Factor	Hydrocarbon Type	Carbon No.
188	2,6-Dimethyloctane	77.56	1.086	IP	10
189	N-propylbenzene	78.15	1.025	AR	9
190	C ₁₀ -isoparaffin	78.51	1.086	IP	10
191	1-Methyl,3-ethylbenzene	79.18	1.025	AR	9
192	1-Methyl,4-ethylbenzene	79.42	1.025	AR	9
193	1,3,5-Trimethylbenzene	80.14	1.025	AR	9
194	C ₁₀ -isoparaffin	80.81	1.086	IP	10
195	C ₁₀ -isoparaffin	81.04	1.086	IP	10
196	1-Methyl,2-ethylbenzene	81.31	1.025	AR	9
197	C ₁₀ -isoparaffin	81.78	1.086	IP	10
198	C ₁₀ -isoparaffin	82.15	1.086	IP	10
199	C ₁₀ -naphthene	82.53	1.075	NA	9
200	C ₁₀ -isoparaffin	82.76	1.086	IP	10
201	1,2,4-Trimethylbenzene	83.25	1.025	AR	9
202	C ₁₀ -naphthene	83.60	1.086	NA	10
203	C ₁₀ -isoparaffin	83.72	1.086	IP	10
204	C ₁₀ -Aromatic	84.82	1.025	AR	10
205	C ₁₀ -Aromatic	85.05	1.025	AR	10
206	C ₁₀ -Aromatic	85.37	1.025	AR	10
207	N-decane	85.54	1.086	NP	10
208	C ₁₀ -Aromatic	85.87	1.025	AR	10
209	1,2,3-Trimethylbenzene	86.42	1.025	AR	9
210	1-Methyl,4-isopropylbenzene	86.59	1.025	AR	10
211	1-Methyl,3-isopropylbenzene	86.97	1.025	AR	10
212	C ₁₁ -isoparaffin	87.45	1.025	IP	10
213	Indan	87.71	1.025	AR	9
214	C ₁₁ -isoparaffin	88.02	1.025	IP	10
215	1-Methyl,2-isopropylbenzene	88.40	1.025	AR	10
216	C ₁₁ -isoparaffin	88.77	1.025	IP	10
217	1,3-Diethylbenzene	89.68	1.030	AR	10
218	1-Methyl,3N-propylbenzene	89.99	1.030	AR	10
219	1-Methyl,4N-propylbenzene	90.43	1.030	AR	10
220	1,3-Dimethyl,5-ethylbenzene	90.74	1.030	AR	10
221	C ₁₀ -Aromatic	91.02	1.030	AR	10
222	1-Methyl,2N-propylbenzene	91.71	1.030	AR	10
223	C ₁₂ -isoparaffin	92.21	1.086	IP	12
224	C ₁₂ -isoparaffin	92.52	1.086	IP	12
225	1,4-Dimethyl,2-ethylbenzene	92.83	1.030	AR	10
226	1,3-Dimethyl,4-ethylbenzene	93.02	1.030	AR	10
227	C ₁₂ -isoparaffin	93.45	1.086	IP	12
228	1-Methylindan	93.68	1.030	AR	10
228	1,2-Dimethyl,4-ethylbenzene	93.68	1.030	AR	10
229	C ₁₂ -isoparaffin	94.15	1.086	IP	12
230	C ₁₂ -isoparaffin	94.35	1.086	IP	12
231	1,3-Dimethyl-2-ethylbenzene	94.53	1.030	AR	10
232	C ₁₁ -isoparaffin	95.09	1.086	IP	11
233	C ₁₂ -isoparaffin	95.53	1.086	IP	12
234	1,2-Dimethyl-3-ethylbenzene	95.85	1.030	AR	10
235	C ₁₀ -naphthene	96.17	1.075	NA	10
236	C ₁₂ -isoparaffin	96.41	1.086	IP	12
237	N-Undecane	96.59	1.086	NP	11
238	C ₁₂ -isoparaffin	96.80	1.086	IP	12
239	1,2,4,5-Tetramethylbenzene	97.15	1.030	AR	10
240	1,2,3,5-Tetramethylbenzene	97.51	1.030	AR	10
241	C ₁₁ -naphthene	98.11	1.075	NA	11
242	C ₁₁ -isoparaffin	98.53	1.025	IP	10
243	5-Methylindan	99.27	1.030	AR	10
244	C ₁₁ -Aromatic	99.75	1.033	AR	11
245	C ₁₁ -Aromatic	100.05	1.033	AR	11
246	4-Methylindan	100.32	1.030	AR	10
247	C ₁₁ -Aromatic	100.57	1.033	AR	11
248	1,2,3,4-Tetramethylbenzene	100.77	1.030	AR	10
249 to 254	C ₁₁ -aromatic	from 101.25 to 103.20	1.033	AR	11
255	Naphthalene	103.30	1.030	AR	10

TABLE A1.2 *Continued*

Nb	Compounds	Retention, min.	Response Factor	Hydrocarbon Type	Carbon No.
256	C ₁₂ -isoparaffin	103.85	1.086	IP	12
257 to 263	C ₁₁ -aromatic	from 104.10 to 107.50	1.030	AR	11
264	N-dodecane	107.81	1.086	NP	12
265 to 274	C ₁₁ +aromatic	from 107.90 to 114.00	1.033	AR	11+
275	2-Methylnaphthalene	114.09	1.033	AR	11
276	1-Methylnaphthalene	115.54	1.033	AR	11
277 and +	Hydrocarbon C ₁₂ +	>115.70	1.035		

^A Co-eluted compounds.

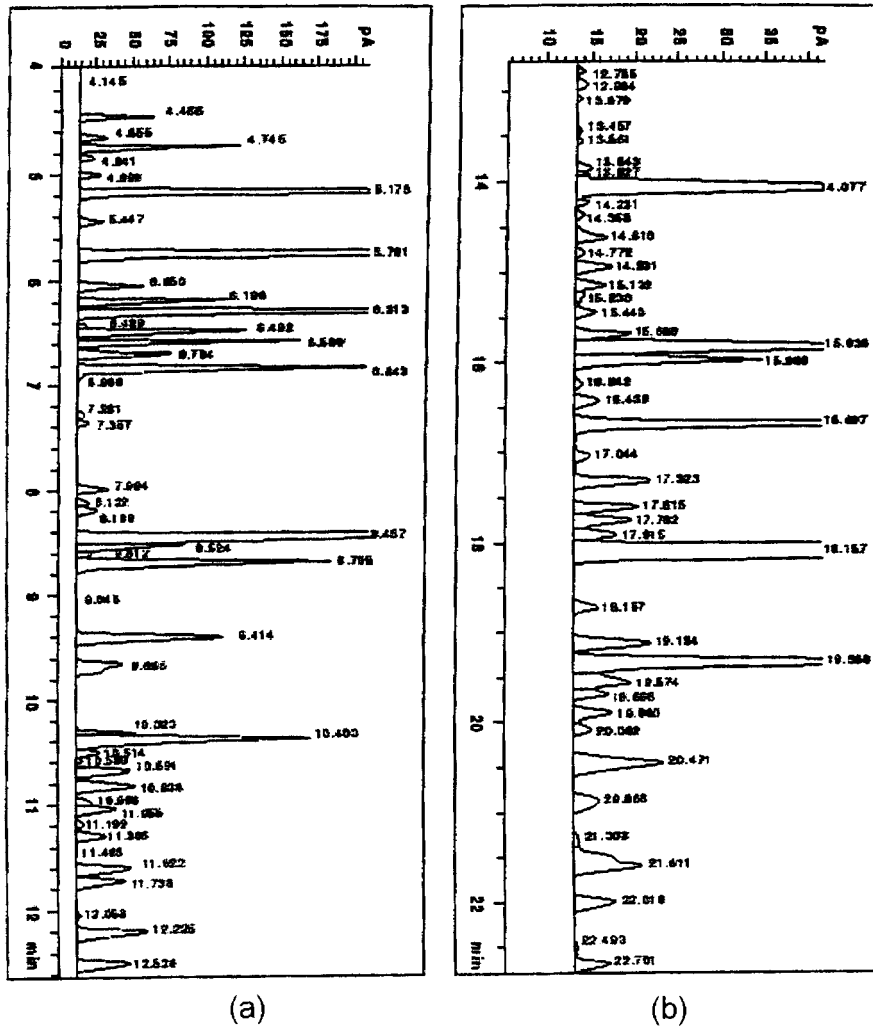
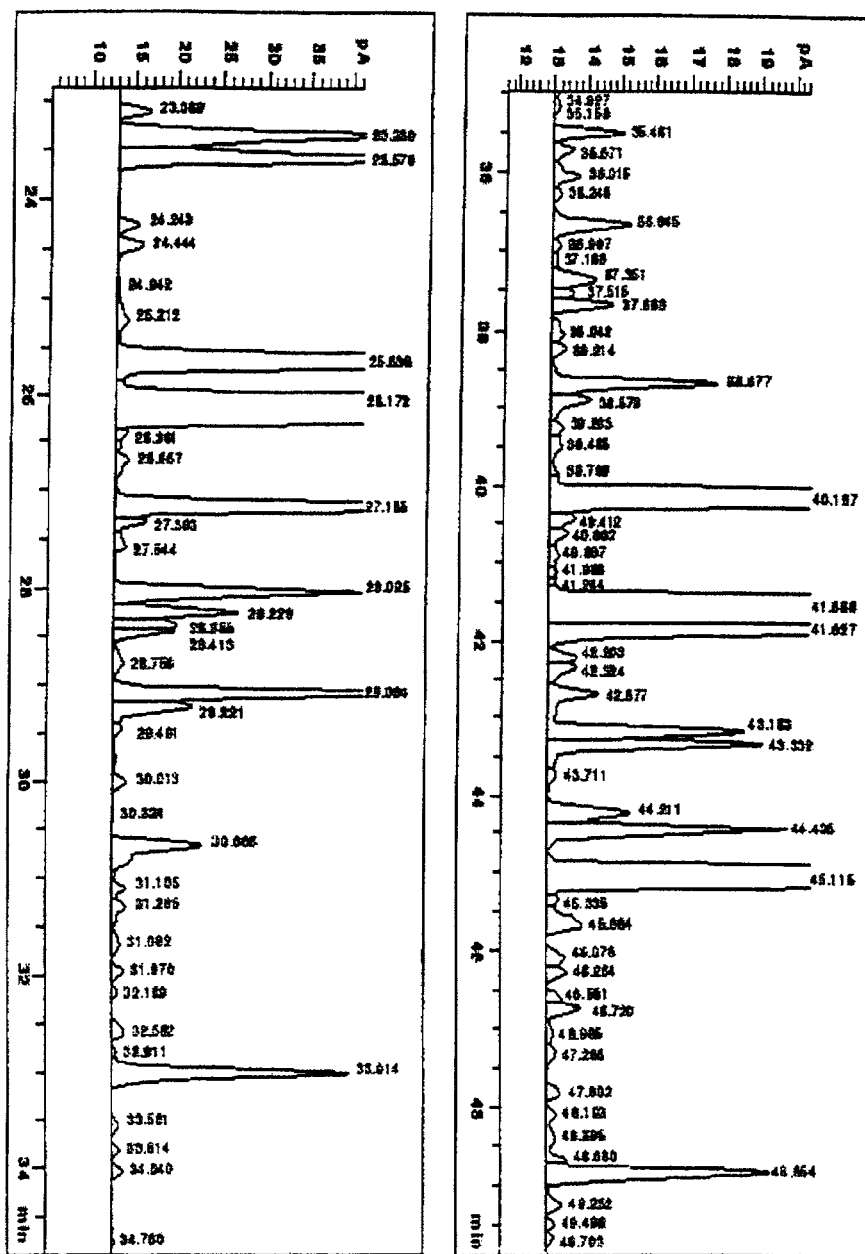


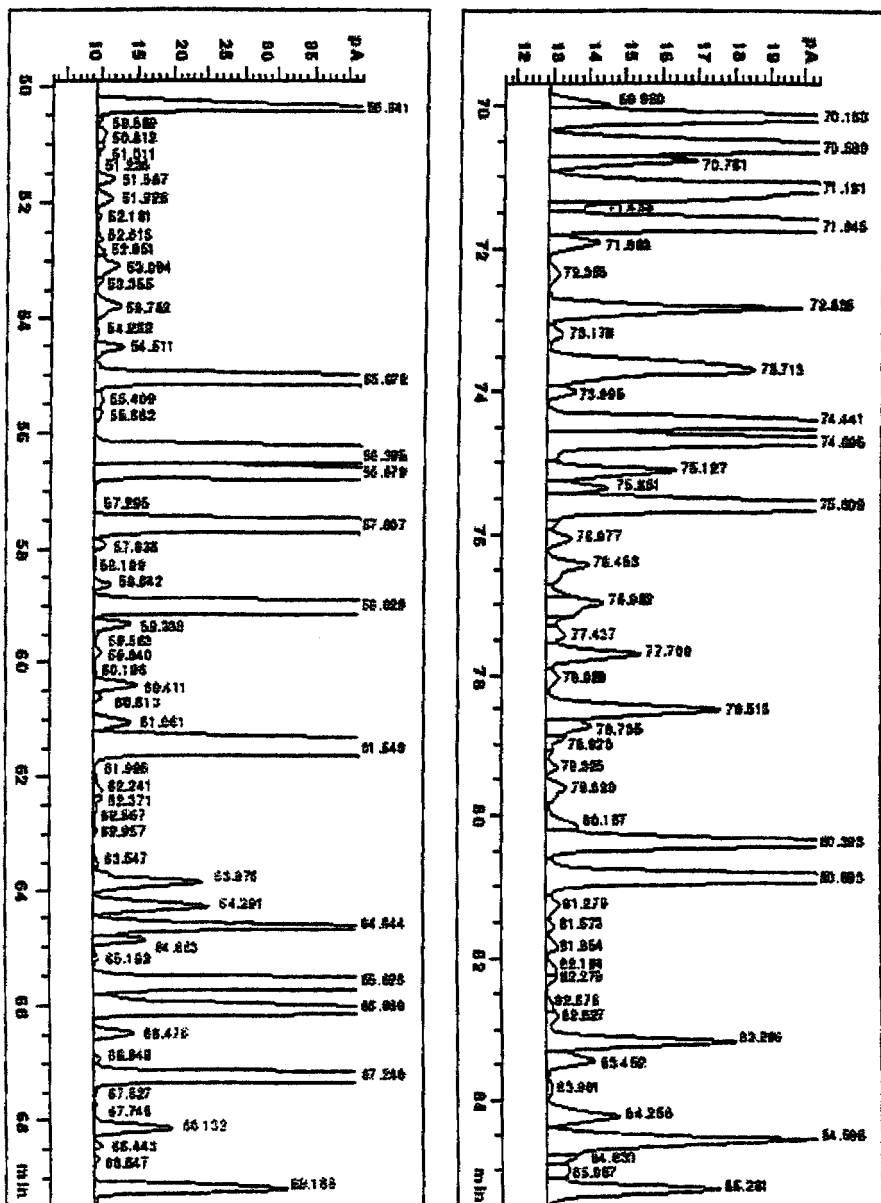
FIG. A1.1 Method 1—Reference Chromatogram with Retention Times and Peak Numbers



(c)

(d)

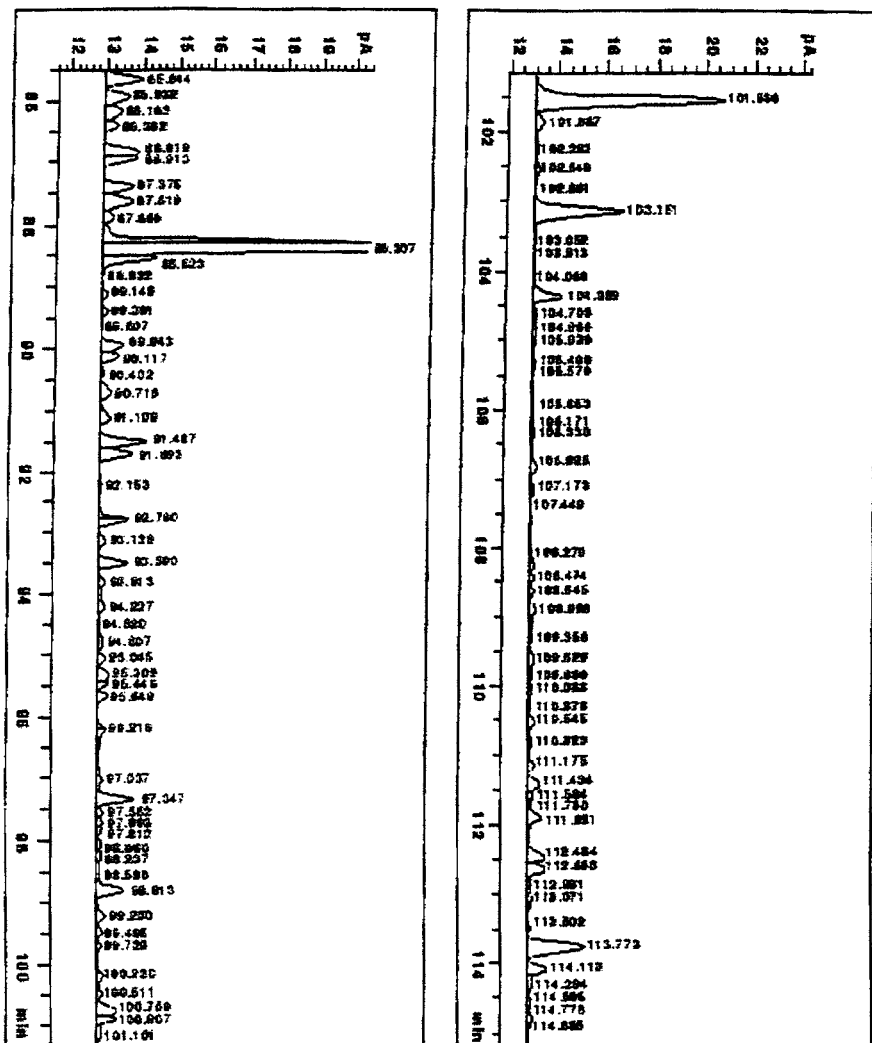
FIG. A1.1 Method 1—Reference Chromatogram with Retention Times and Peak Numbers (continued)



(e)

(f)

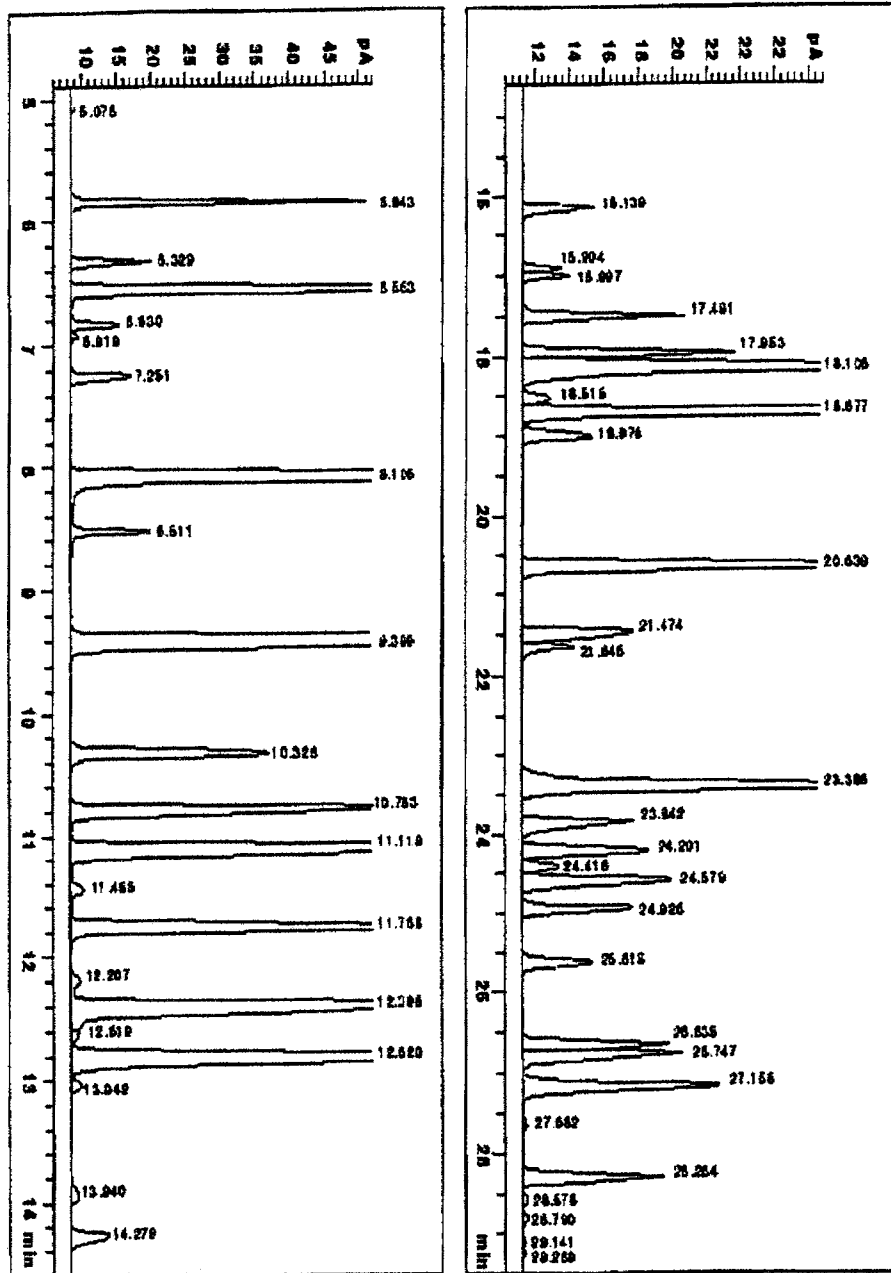
FIG. A1.1 Method 1—Reference Chromatogram with Retention Times and Peak Numbers (continued)



(g)

(h)

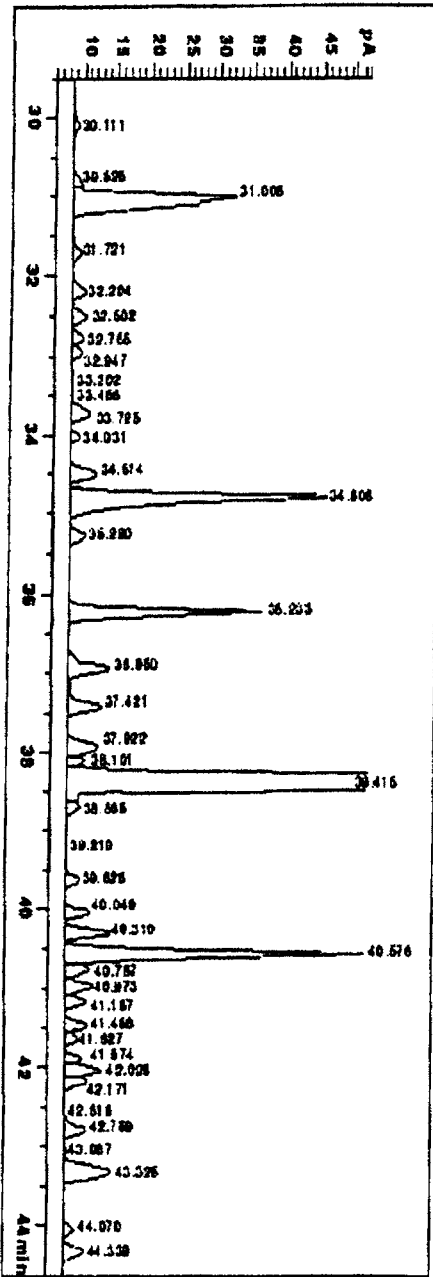
FIG. A1.1 Method 1-Reference Chromatogram with Retention Times and Peak Numbers (continued)



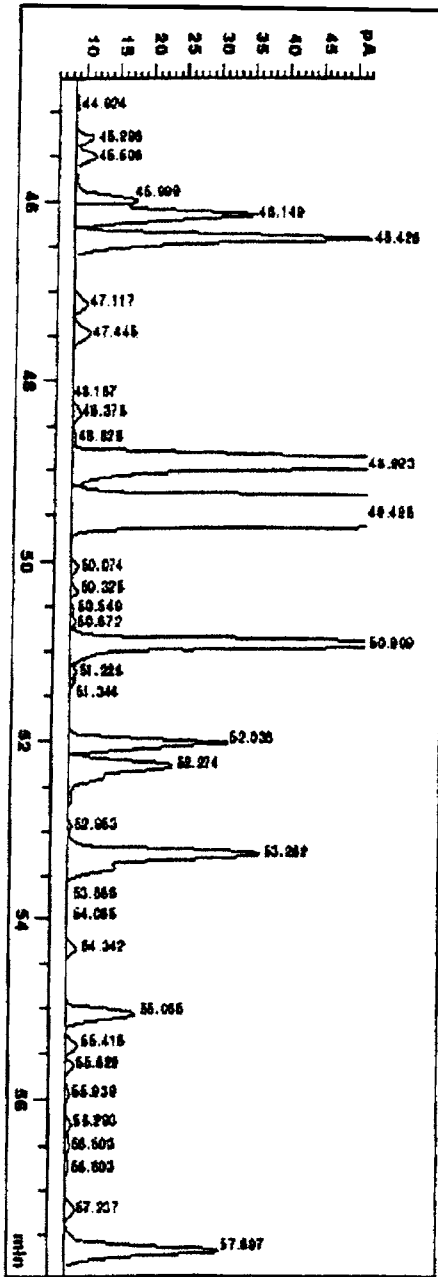
(a)

(b)

FIG. A1.2 Method 2—Reference Chromatogram

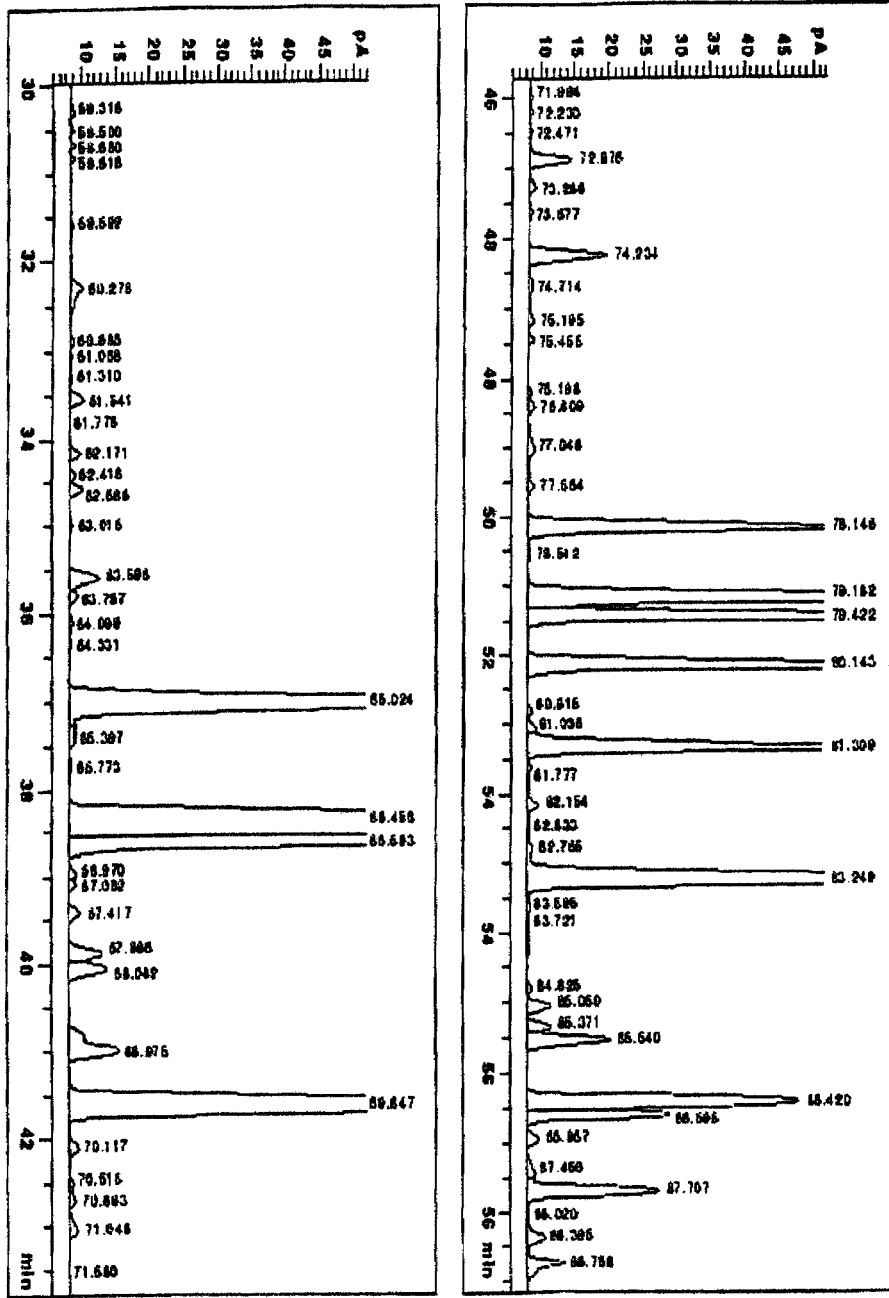


(c)



(d)

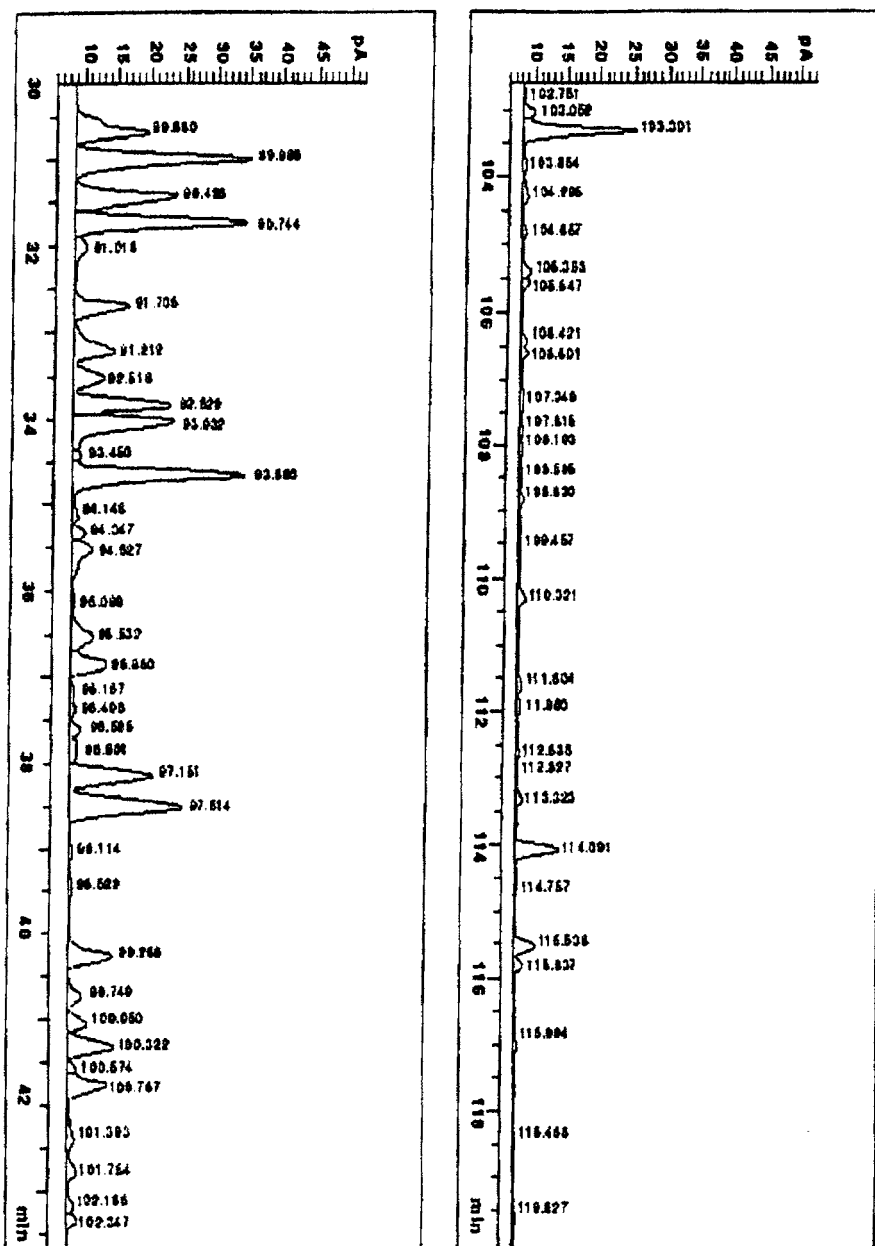
FIG. A1.2 Method 2—Reference Chromatogram (continued)



(e)

(f)

FIG. A1.2 Method 2—Reference Chromatogram (continued)



(g)

(h)

FIG. A1.2 Method 2—Reference Chromatogram (continued)

APPENDIX**(Nonmandatory Information)****X1. BIBLIOGRAPHY**

X1.1 The following publications on DHA analyses may be useful as background and are recommended to the user of these test procedures:

X1.1.1 Johansen, N. G. and Etre, L. S. "Retention Index Values of Hydrocarbons on Open Tubular Columns Coated with Methyl Silicone Liquid Phases," *Chromatographia*, Vol 5, No. 10, October 1982.

X1.1.2 Johansen, N. G., Etre, L. S., and Miller, R. L. "Quantitative Analysis of Hydrocarbons by Structural Group Type in Gasolines and Distillates. Part 1," *Journal of Chromatography*, 256, 1983, pp. 393-417.

X1.1.3 Kopp, V. R., Bones, C. J., Doerr, D. G., Ho, S. P., and Schubert, A. J. "Heavy Hydrocarbon/Volatility Study: Fuel Blending and Analysis for the Auto/Oil Air Quality Improvement Research Program," SAE Paper No. 930143, March, 1993.

X1.1.4 Schubert, A. J. and Johansen, N. J. "Cooperative Study to Evaluate a Standard Test Method for the Speciation of

Gasolines by Capillary Gas Chromatography," SAE Paper No. 930144, March, 1993.

X1.1.5 DiSanzo, F. P. and Giarrocco, V. G., "Analysis of Pressurized Gasoline-Range Liquid Hydrocarbon Samples by Capillary Column and PIONA Analyzer Gas Chromatography," *Journal of Chromatographic Science*, Vol 26, June 1988, pp 258-266.

X1.1.6 Durand, J. P., Beboluene, J. J. and Ducrozet, A., "Detailed Characterization of Petroleum Products with Capillary GC Analyzers" *Analisis*, 23, 1995, pp. 481-483.

X1.1.7 Canadian General Standards Board: CAN/CGSB-3.0, No.14.3-94, "Test Method for Individual Hydrocarbon Component Analysis (IHA) in Spark Ignition Engine Fuels by Gas Chromatography."

X1.1.8 French Standard NF N07-086, December 1995, "Determination of Hydrocarbon Type Contents in Motor Gasolines from Detailed Analysis Capillary Gas Chromatography."

ASTM International takes no position respecting the validity of any patent rights asserted in connection with any item mentioned in this standard. Users of this standard are expressly advised that determination of the validity of any such patent rights, and the risk of infringement of such rights, are entirely their own responsibility.

This standard is subject to revision at any time by the responsible technical committee and must be reviewed every five years and if not revised, either reapproved or withdrawn. Your comments are invited either for revision of this standard or for additional standards and should be addressed to ASTM International Headquarters. Your comments will receive careful consideration at a meeting of the responsible technical committee, which you may attend. If you feel that your comments have not received a fair hearing you should make your views known to the ASTM Committee on Standards, at the address shown below.

This standard is copyrighted by ASTM International, 100 Barr Harbor Drive, PO Box C700, West Conshohocken, PA 19428-2959, United States. Individual reprints (single or multiple copies) of this standard may be obtained by contacting ASTM at the above address or at 610-832-9585 (phone), 610-832-9555 (fax), or service@astm.org (e-mail); or through the ASTM website (www.astm.org). Permission rights to photocopy the standard may also be secured from the ASTM website (www.astm.org/COPYRIGHT/).