



Standard Test Method for Determination of Sulfur Compounds in Natural Gas and Gaseous Fuels by Gas Chromatography and Flame Photometric Detection¹

This standard is issued under the fixed designation D6228; the number immediately following the designation indicates the year of original adoption or, in the case of revision, the year of last revision. A number in parentheses indicates the year of last reapproval. A superscript epsilon (ϵ) indicates an editorial change since the last revision or reapproval.

1. Scope

1.1 This test method covers the determination of individual volatile sulfur-containing compounds in gaseous fuels by gas chromatography (GC) with flame photometric detection (FPD). The detection range for sulfur compounds is from 20 to 20 000 picograms (pg) of sulfur. This is equivalent to 0.02 to 20 mg/m³ or 0.014 to 14 ppmv of sulfur based upon the analysis of a 1-mL sample.

1.2 This test method describes a GC-FPD method using a specific capillary GC column. Other GC-FPD methods, with differences in GC column and equipment setup and operation, may be used as alternative methods for sulfur compound analysis with different range and precision, provided that appropriate separation of the sulfur compounds of interest can be achieved.

1.3 This test method does not intend to identify all individual sulfur species. Total sulfur content of samples can be estimated from the total of the individual compounds determined. Unknown compounds are calculated as monosulfur-containing compounds.

1.4 The values stated in SI units are to be regarded as standard. The values stated in inch-pound units are for information only.

1.5 *This standard does not purport to address all the safety concerns, if any, associated with its use. It is the responsibility of the user of this standard to establish appropriate safety and health practices and determine the applicability of regulatory limitations prior to use.*

2. Referenced Documents

2.1 ASTM Standards:²

¹ This test method is under the jurisdiction of ASTM Committee D03 on Gaseous Fuels and is the direct responsibility of Subcommittee D03.05 on Determination of Special Constituents of Gaseous Fuels.

Current edition approved May 10, 2003. Published August 2003. Originally approved in 1998. Last previous edition approved in 1998 as D6228 – 98. DOI: 10.1520/D6228-98R03.

² For referenced ASTM standards, visit the ASTM website, www.astm.org, or contact ASTM Customer Service at service@astm.org. For *Annual Book of ASTM Standards* volume information, refer to the standard's Document Summary page on the ASTM website.

D1072 Test Method for Total Sulfur in Fuel Gases by Combustion and Barium Chloride Titration

D1265 Practice for Sampling Liquefied Petroleum (LP) Gases, Manual Method

D1945 Test Method for Analysis of Natural Gas by Gas Chromatography

D3609 Practice for Calibration Techniques Using Permeation Tubes

D4468 Test Method for Total Sulfur in Gaseous Fuels by Hydrogenolysis and Rateometric Colorimetry

D4626 Practice for Calculation of Gas Chromatographic Response Factors

D5287 Practice for Automatic Sampling of Gaseous Fuels

D5504 Test Method for Determination of Sulfur Compounds in Natural Gas and Gaseous Fuels by Gas Chromatography and Chemiluminescence

E840 Practice for Using Flame Photometric Detectors in Gas Chromatography

2.2 EPA Standards:

EPA-15 Determination of Hydrogen Sulfide, Carbonyl Sulfide and Carbon Disulfide Emissions from Stationary Sources, 40 CFR, Chapter 1, Part 60, Appendix A

EPA-16 Semicontinuous Determination of Sulfur Emissions from Stationary Sources, 40 CFR, Chapter 1, Part 60, Appendix A

3. Terminology

3.1 Abbreviations:

3.1.1 A common abbreviation of a hydrocarbon compound is to designate the number of carbon atoms in the compound. A prefix is used to indicate the carbon chain form, while a subscript suffix denotes the number of carbon atoms, for example, normal decane = n-C₁₀, isotetradecane = i-C₁₄.

3.1.2 Sulfur compounds commonly are referred to by their initials, chemical or formula, for example, methyl mercaptan = MeSH, dimethyl sulfide = DMS, carbonyl sulfide = COS, di-*t*-butyl trisulfide = DtB-TS, and tetrahydrothiophene = THT or thiophane.

4. Summary of Test Method

4.1 Sulfur analysis ideally is performed on-site to eliminate potential sample deterioration during storage. The reactive nature of sulfur components may pose problems both in sampling and analysis. Samples should be collected and stored in containers that are nonreactive to sulfur compounds, such as Tedlar³ bags. Sample containers should be filled and purged at least three times to ensure representative sampling. Laboratory equipment also must be inert, well conditioned, and passivated with a gas containing the sulfur compounds of interest to ensure reliable results. Frequent calibration and daily verification of calibration curve using stable standards are required. Samples should be analyzed within 24 h of collection to minimize sample deterioration. If the stability of analyzed sulfur components is proved experimentally, the time between collection and analysis may be lengthened.

4.2 A 1-mL sample of the fuel gas is injected into a gas chromatograph where it is passed through a 60-m, 0.53-mm inside diameter (ID), thick film, methyl silicone liquid phase, open tubular partitioning column, or a similar column capable of separating sulfur components.

4.3 *Flame Photometric Detectors*—When combusted in a hydrogen-rich flame, sulfur compounds emit light energy characteristic to all sulfur species. The light is detected by a photomultiplier tube (PMT). The PMT response is proportional to the concentration or the amount of sulfur. All sulfur compounds including sulfur odorants can be detected by this technique.

4.4 *Other Detectors*—This test method is written primarily for the flame photometric detector. The same gas chromatographic (GC) method can be used with other sulfur-specific detectors provided they have sufficient sensitivity and selectivity to all sulfur compounds of interest in the required measurement range.

4.5 *Other GC Test Methods*—The GC test methods using sulfur chemiluminescence, reductive rateometric, and electrochemical detectors are available or under development.

5. Significance and Use

5.1 Many sources of natural gas and petroleum gases contain varying amounts and types of sulfur compounds, which are odorous, corrosive to equipment, and can inhibit or destroy catalysts used in gas processing. Their accurate measurement is essential to gas processing, operation, and utilization.

5.2 Small amounts, typically, 1 to 4 ppmv of sulfur odorant compounds, are added to natural gas and liquefied petroleum (LP) gases for safety purposes. Some odorant compounds can be reactive and may be oxidized, forming more stable compounds having lower odor thresholds. These gaseous fuels are analyzed for sulfur odorants to help ensure appropriate odorant levels for safety.

5.3 This test method offers a technique to determine individual sulfur species in gaseous fuel and the total sulfur content by calculation. Gas chromatography is used commonly and extensively to determine other components in gaseous fuels

including fixed gas and organic components (see Test Method D1945). This test method dictates the use of a specific GC technique with one of the more common detectors for measurement.

6. Apparatus

6.1 *Chromatograph*—Any gas chromatograph that has the following performance characteristics can be used.

6.1.1 *Sample Inlet System*—Gas samples are introduced to the gas chromatograph using an automated or manually operated stainless steel gas sampling valve enclosed in a heated valve oven, which must be capable of operating continuously at a temperature of 50°C above the temperature at which the gas was sampled. TFE-fluorocarbon tubing made of fluorinated ethylene propylene (FEP), 316 stainless steel tubing, or other tubing made of nonpermeable, nonsorbing, and nonreactive materials, as short as possible and heat traced at the same temperature, should be used for transferring the sample from a sample container to the gas-sampling valve. A 1.0-mL sampling loop made of nonreactive materials, such as deactivated fused silica or 316 stainless steel is used to avoid possible decomposition of reactive sulfur species. Other size fixed-volume sampling loops may be used for different concentration ranges. A 1- to 2-m section of deactivated precolumn attached to the front of the analytical column is recommended. The precolumn is connected directly to the gas sampling valve for on-column injection. The inlet system must be well conditioned and evaluated frequently for compatibility with trace quantities of reactive sulfur compounds, such as *tert*-butyl mercaptan.

6.1.2 *Digital Pressure Transmitter*—A calibrated stainless steel pressure/vacuum transducer with a digital readout may be equipped to allow sampling at different pressures to generate calibration curves.

6.1.3 *Column Temperature Programmer*—The chromatograph must be capable of linear programmed temperature operation over a range from 30 to 200°C, in programmed rate settings of 0.1 to 30°C/min. The programming rate must be sufficiently reproducible to obtain retention time repeatability of 0.05 min (3 s).

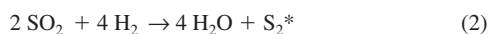
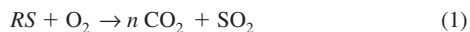
6.1.4 *Carrier and Detector Gas Control*—Constant flow control of carrier and detector gases is critical to optimum and consistent analytical performance. Control is best provided by the use of pressure regulators and fixed flow restrictors. The gas flow rate is measured by any appropriate means and the required gas flow indicated by the use of a pressure gage. Mass flow controllers, capable of maintaining gas flow constant to $\pm 1\%$ at the required flow rates also can be used. The supply pressure of the gas delivered to the gas chromatograph must be at least 69 kPa (10 psi) greater than the regulated gas at the instrument to compensate for the system back pressure. In general, a supply pressure of 552 kPa (80 psig) will be satisfactory.

6.1.5 *Detector*—A flame photometric detector calibrated in the sulfur-specific mode is used for this test method. Other detectors as mentioned in 4.4 will not be covered in this test method. This detector may be obtained from various manufacturers; however, there are variations in design. The pulsed flame photometric detector (PFPD) is one of the new FPD

³ Registered trademark. Available from DuPont de Nemours, E. I., & Co., Inc., Barley Mill Plaza, Bldg. 10, Wilmington, DE 19880-0010.

designs. The pressure and flow rate of the hydrogen and air gases used in the detector may be different. The selection of which detector to use should be based on its performance for the intended application. The detector should be set according to the manufacturer's specifications and tuned to the best performance of sensitivity and selectivity as needed.

6.1.5.1 When sulfur-containing compounds are burned in a hydrogen-rich flame, they quantitatively produce a S_2^* species in an excited state (Eq 1 and Eq 2). The light emitted from this species is detected by a photomultiplier tube (PMT) (Eq 3). A 393-nm bandpass optical filter is normally used to enhance the selectivity of detection. The selectivity normally is about 10^4 to 1 by mass of sulfur to mass of carbon.



where:

$h\nu$ = emitted light energy.

6.1.5.2 The intensity of light is not linear with the sulfur concentration but is proportional approximately to the square of the sulfur concentration. The relationship between the FPD response (R_D) and the sulfur concentration (S) is given by Eq 4 and Eq 5. The n -factor usually is less than 2.0.

$$R_D \propto [S]^n \quad (4)$$

$$\text{Log } [S] \propto 1/n \text{ Log } R \quad (5)$$

where:

n = exponential factor (1.7 to 2.0).

6.1.5.3 The linear calibration curve can be made using a log-log plot. Some instruments use an electronic linearizer to produce a signal with direct linear response. The dynamic range of this linear relationship is about 1×10^3 .

6.2 *Column*—A 60- by 0.53-m ID fused silica open tubular column containing a 5- μ m film thickness of bonded methyl silicone liquid phase is used. The column shall provide adequate retention and resolution characteristics under the experimental conditions described in 7.3. Other columns, which can provide equivalent separation, can be used as well.

6.3 Data Acquisition:

6.3.1 *Recorder*—A 0- to 1-mV range recording potentiometer, or equivalent, with a full-scale response time of 2 s or less can be used.

6.3.2 *Integrator*—The use of an electronic integrating device or computer is recommended. The device and software must have the following capabilities:

6.3.2.1 Graphic presentation of the chromatogram.

6.3.2.2 Digital display of chromatographic peak areas.

6.3.2.3 Identification of peaks by retention time or relative retention time, or both.

7. Reagents and Materials

7.1 *Sulfur Permeation Tube Standards*—Gaseous standards generated from individual or a combination of certified permeation tubes at a constant temperature and flow rate shall be used for all calibrations. Each permeation tube will be weighed to the nearest 0.1 mg on a periodic basis after the permeation rate has equilibrated and remains constant. The standard concen-

tration is calculated by mass loss and dilution gas flow rate. Impurities permeated from each tube must be detected, measured, and accounted for in the mass loss, if they are present above a level of 0.1 % of the permeated sulfur species. See Practice D3609.

7.2 *Compressed Cylinder Gas Standards*—As an alternative, blended gaseous sulfur standards may be used if a means to ensure accuracy and stability of the mixture is available. These mixtures can be a source of error if their stability during storage cannot be guaranteed. (**Warning**—Sulfur compounds may be flammable and harmful or fatal if ingested or inhaled.)

7.3 *Carrier Gas*—Helium or nitrogen of high purity (99.999 % min purity). (**Warning**—Helium and nitrogen are compressed gases under high pressure.) Additional purification is recommended by the use of molecular sieves or other suitable agents to remove water, oxygen, and hydrocarbons. Available pressure must be sufficient to ensure a constant carrier gas flow rate (see 6.1.4).

7.4 *Hydrogen*—Hydrogen of high purity (99.999 % min purity) is used as fuel for the flame photometric detector (FPD). (**Warning**—Hydrogen is an extremely flammable gas under high pressure.)

7.5 *Air*—High-purity (99.999 % min purity) compressed air is used as the oxidant for the flame photometric detector (FPD). (**Warning**—Compressed air is a gas under high pressure that supports combustion.)

8. Preparation of Apparatus and Calibration

8.1 *Chromatograph*—Place in service in accordance with the manufacturer's instructions. Typical operating conditions are shown in Table 1.

8.2 *FPD*—Place the detector in service in accordance with the manufacturer's instructions. Hydrogen and air flows are critical and must be adjusted properly in accordance with the instruction furnished by the manufacturer. With the FPD flame ignited, monitor the signal to verify compliance with the signal noise and drift specified by the manufacturer. The FPD flame should be maintained to give consistent and optimum sensitivity for the detection range.

8.2.1 *Sample Injection*—A sample loop of 1.0 mL of suitable size for sample injection may be used for performance check. A linear calibration curve may be determined by using standards of varying concentrations or by injecting a single calibration standard at different pressures from 13.3 to 133 kPa (100 to 1000 torr). If the latter method is used, the concentration of sulfur component for calibration is calculated using the following equation.

$$S_n = (P_s/P_o) \times C_n \quad (6)$$

TABLE 1 Gas Chromatographic Operating Parameters

Gas Sample Loop:	1.0 mL at 120°C
Injection Type:	On-column
Carrier Gas:	He at 11.0 mL/min or at a flow rate allowing CH ₄ elutes at approximately 2.1 min
Column Oven:	30°C hold 1.5 min, 15°C/min to 200°C, hold 8 min, or as needed
Detector:	H ₂ /air ratio specified by manufacturer, 250°C, 20 mL/min, helium make-up gas

where:

S_n = calculated concentration of the sulfur compound in the sampled gas on mole or volume basis,

P_s = sampling pressure as absolute,

P_o = laboratory ambient pressure as absolute, and

C_n = concentration of the sulfur compound in the calibration standard.

8.2.2 Detector Response Calibration—Analyze the calibration gas and obtain the chromatograms and peak areas. Determine the linear range of detector response using sample injection techniques illustrated in 8.2.1. A log/log plot or a linearized plot may be constructed with the linear correlation factor calculated. Calculate the relative sulfur response factor of each sulfur compound at ambient pressure by:

$$F_n = (S_n/A_n) \times L_n \quad (7)$$

where:

F_n = sulfur response factor of compound,

S_n = concentration of the sulfur compound in the sampled gas on mole or volume basis,

A_n = peak area of the sulfur compound measured, and

L_n = moles of sulfur in the compound.

Example:

Assume 1.0 ppmv of dimethyl sulfide (DMS) injected with a 1.0-mL sample loop.

1-ppmv DMS = $62.13/22.41 = 2.772 \text{ mg/m}^3$ (from Table 2). 1.0 mL of 1-ppmv DMS = 2772-pg DMS = $2772 \times 51.61 \% = 1430\text{-pg S}$. If the peak area of DMS response is 15 850 counts, the response factor F_n (S/peak) is $1430/15\ 850 \times 1 = 9.02 \times 10^2$ (pg sulfur/unit area). The response factor (F_n) of 1.0-mL injection = $1.0/15\ 850 \times 1 = 63 \times 10^{-6}$ (ppmv DMS/unit area).

All mono-sulfur compounds should have approximately the same response factor. The response factor (F_n) of each sulfur compound should be within 10 % of F_n for dimethyl sulfide. The day-to-day variation of F_n should not be greater than 5 %. The detector should be maintained and flow rates readjusted to optimize the detector performance if F_n exceeds this limitation. Table 2 lists common sulfur compounds found in gaseous fuel and their properties for calculation.

8.2.3 Interferences—There are two types of interferences that must be minimized for reliable quantitation.

8.2.3.1 Hydrocarbon Quenching—Hydrocarbons produce a quenching effect on sulfur detection as a result of the formation of a large amount of carbon dioxide in the flame suppressing the formation of SO_2 . The quenching can be minimized by optimizing the chromatographic conditions to separate the sulfur components of interest from large hydrocarbons present in the sample matrix. A flame ionization detector (FID) or thermal conductivity detector (TCD) can be used to identify the presence of interfering hydrocarbons. Sample dilution or injection of a smaller volume of sample may be used to alleviate the quenching effect if sulfur concentration is significantly higher than the method detection limit.

8.2.3.2 Self-Quenching—In other cases, the reverse of the reaction shown in Eq 3 produces self-quenching. This arises when the emitted light is reabsorbed before reaching the photomultiplier. It occurs when a very large concentration of any sulfur species is present in the flame above and beyond the linearity range of the detector. It often generates an M-shape peak with the inverted signal at a component's peak apex, which mistakenly can be identified as two close eluting compounds. Sample dilution or smaller sample injection may eliminate this effect.

8.3 Chromatography—A chromatogram of typical natural gas analysis is illustrated in Fig. 1 (relative response versus retention time). The retention times of selected sulfur components are listed for reference (Table 3). They may vary considerably depending on the chromatographic conditions. The eluting sequence and spread of sulfur peaks and their peak shape should remain the same. Adequate resolution defined as baseline separation of adjacent peaks shall be achieved. The baseline separation of two peaks is defined as the FPD signal of the first compound returns to a point at least below 5 % of the smallest peak of two.

9. Procedure

9.1 Sampling and Preparation of Sample Aliquots:

9.1.1 Gas Samples—Samples should be supplied to the laboratory in specially conditioned high-pressure sample containers or in Tedlar³ bags at atmospheric pressure. The sample must be analyzed as soon as possible, preferably within 24 h of sampling.

9.2 Instrument Setup—Set up the GC-FPD in accordance with the chromatograph operating parameters listed in Table 1.

9.3 Instrument Performance—Analyze selected standards to verify the chromatographic performance (see 8.3), retention times (Table 3), and the response factors (see 8.2.2). The calibration made at the beginning and the end of each run or series of runs within 24-h period shall not exceed $\pm 5 \%$.

9.4 External Standard Calibration—At least twice a day or as frequently as necessary, analyze the calibration standard mix to verify the calibration curve determined in 8.2.1 and 8.2.2 and determine the standard response factors for the sample analysis.

9.5 Sample Analysis—Evacuate and purge the lines from the sample container through the sample loop in the gas chromatograph. Inject 1.0 mL with a gas sampling valve as in 8.2.1. If the sample size exceeds the linear range of the detector, reduce the sample size using a smaller loop or lower sampling pressure. Run the analysis in accordance with the conditions

TABLE 2 Physical Properties of Common Sulfur Compounds

Compound	Relative Molecular Mass (Molecular Weight)	% 5	Boiling Point, °C	Vapor Pressure kPa at 37.78°C
H ₂ S	34.08	94.09	-60.3	...
COS	60.08	53.37	-50.2	...
MeSH	48.11	66.65	6.2	214
EtSH	62.13	51.61	35.0	112
DMS	62.13	51.61	37.3	103
CS ₂	76.14	84.23	46.5	...
iPrSH	76.16	42.10	52.6	61
TBM	90.19	35.55	64.0	41
nPrSH	76.16	42.10	67.0	35
MES	76.16	42.10	67.0	36
THT	88.17	36.37	120	4.6
di-ETS	90.19	35.55	92.0	...
DMDS	94.20	68.08	109.7	...
di-Et-DS	122.25	52.46	154.0	...

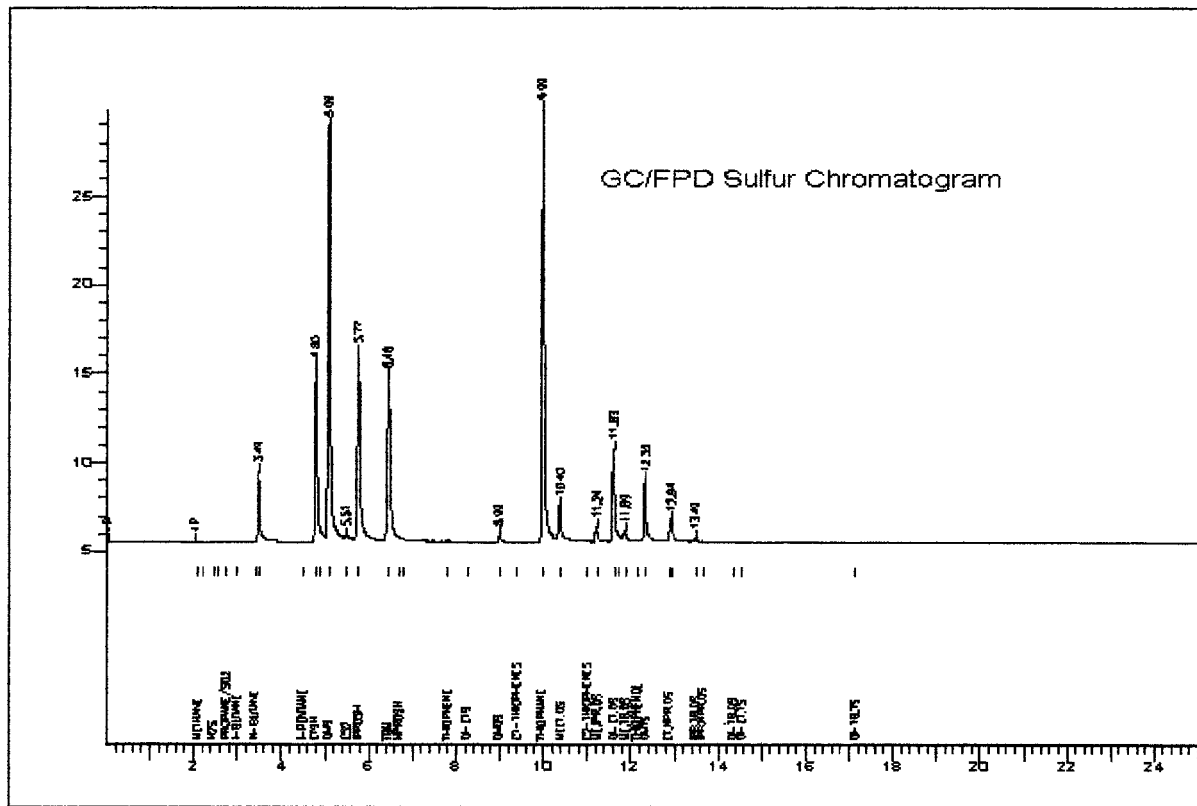


FIG. 1 Chromatogram of a Composite Odorized Natural Gas

TABLE 3 Retention Times of Various Sulfur Components

RT, min	Compound	RT, min	Compound	RT, min	Compound
2.09	methane	5.50	CS ₂	11.23	M-iPr-DS
2.20	ethane	5.80	iPrSH	11.62	DEDS
2.45	H ₂ S	6.45	TBM	11.74	M-nPr-DS
2.55	COS	6.70	nPrSH	11.90	M-tB-DS
2.65	propane	6.80	MES	12.35	DMTS
3.00	i-butane	7.80	thiophene	12.87	E-nPr-DS
3.40	n-butane	8.25	DES	12.98	DiPr-DS
3.52	MeSH	9.00	DMDS	13.50	iPr-tB-DS
4.50	i-pentane	9.42	M-thiophenes	13.65	iPr-nPr-DS
4.75	EtSH	9.95	THT	14.35	DtB-DS
4.90	n-pentane	10.37	MEDS	14.55	DEt-TS
5.10	DMS	11.00	C ₂₇ thiophenes	17.15	DtB-TS

specified in Table 1. Obtain the chromatographic data by means of a potentiometric record (graphic), digital integrator, or computer-based chromatographic data system. Examine the graphic display or digital data for any errors, for example, over-range component data, and repeat the injection and analysis, if necessary. The difference between corresponding peak areas of repeated runs should not exceed 5 %.

9.6 *Compound Identification*—Sulfur compounds are identified by their retention times established during calibration. All compounds without matching standards are identified as individual unknowns.

10. Calculation

10.1 Determine the chromatographic peak area of each component and use the response factor (Eq 7) obtained from the calibration run to calculate the amount of each sulfur

compound present corrected for injection pressure. The amount of each unknown sulfur compound is calculated using the response factor of the closest adjacent identified compound, unless that compound shows abnormal peak shape.

$$C_n = (A_n/F_n)(P_o/P_s)/L_n \quad (8)$$

where:

- C_n = concentration of the sulfur compound in the gas on mole or volume basis,
- A_n = peak area of the sulfur compound measured,
- F_n = sulfur response factor of compound,
- P_o = laboratory ambient pressure,
- P_s = sampling pressure, and
- L_n = moles of sulfur in the compound.

11. Report

11.1 Report the identification and concentration of each individual sulfur compound in ppmv. Report the sum of all sulfur components detected to the nearest ppmv or pg as total sulfur.

12. Precision and Bias

12.1 *Precision*—The precision of this test method is determined based on a sulfur standard mix in methane, which is stable during the testing period. The statistical examination of the laboratory test results is as follows:

12.1.1 *Repeatability (Single-Operator and Apparatus)*—The difference between successive test results obtained by the same operator with the same apparatus under constant operating conditions on identical test material would, in the long run,

in the normal and correct operation of this test method, exceed the following values by only one case in twenty.

Sulfur Compound	ppmv	Repeatability
COS	2.07	±0.06
DMS	3.63	±0.12
NPM	3.72	±0.12
DMDS	2.00	±0.06
THT	6.44	±0.16

12.1.2 *Reproducibility (Different Operators, Apparatus, and Laboratories)*—Since reference samples stable over a long testing period, which are required for this determination, are not available at this time, reproducibility cannot be determined.

ASTM International takes no position respecting the validity of any patent rights asserted in connection with any item mentioned in this standard. Users of this standard are expressly advised that determination of the validity of any such patent rights, and the risk of infringement of such rights, are entirely their own responsibility.

This standard is subject to revision at any time by the responsible technical committee and must be reviewed every five years and if not revised, either reapproved or withdrawn. Your comments are invited either for revision of this standard or for additional standards and should be addressed to ASTM International Headquarters. Your comments will receive careful consideration at a meeting of the responsible technical committee, which you may attend. If you feel that your comments have not received a fair hearing you should make your views known to the ASTM Committee on Standards, at the address shown below.

This standard is copyrighted by ASTM International, 100 Barr Harbor Drive, PO Box C700, West Conshohocken, PA 19428-2959, United States. Individual reprints (single or multiple copies) of this standard may be obtained by contacting ASTM at the above address or at 610-832-9585 (phone), 610-832-9555 (fax), or service@astm.org (e-mail); or through the ASTM website (www.astm.org). Permission rights to photocopy the standard may also be secured from the ASTM website (www.astm.org/COPYRIGHT/).

12.2 *Bias*—Since there is no accepted reference material for determining the bias, no statement on bias can be made.

13. Keywords

13.1 flame photometric detection; gas chromatography; sulfur compounds, odorants